

TECHNICAL MANUAL

**ORGANIZATIONAL, DIRECT SUPPORT AND
GENERAL SUPPORT MAINTENANCE
REPAIR PARTS AND SPECIAL TOOLS LISTS**

**(INCLUDING DEPOT MAINTENANCE REPAIR
PARTS AND SPECIAL TOOLS LISTS)
FOR
ULV AEROSOL GENERATOR, XKA
NSN 3740-01-076-1341**

HEADQUARTERS, DEPARTMENT OF THE ARMY

10 NOVEMBER 1981

CHANGE }
No. 1 }

HEADQUARTERS
DEPARTMENT OF THE ARMY
WASHINGTON, D.C., 29 January 1988

Organizational, Direct Support and
General Support Maintenance
Repair Parts and Special Tools List
(Including Depot Maintenance Repair Parts and
Special Tools List)

for

ULV AEROSOL GENERATOR, XKA
NSN 3740-01-076-1341

TM 5-3740-214-24P, 10 November 1981, is changed as follows:

1. Remove and insert pages as indicated below. New or changed text material is indicated by a vertical bar in the margin. An illustration change is indicated by a miniature pointing hand.

Remove pages

Insert pages

43 and 44

43 and 44

2. Retain this sheet in front of manual for reference purposes.

By Order of the Secretary of the Army:

CARL E. VUONO
General, United States Army
Chief of Staff

Official:

R. L. DILWORTH
Brigadier General, United States Army
The Adjutant General

DISTRIBUTION:

To be distributed in accordance with DA Form 12-25A, Unit and Direct Support and General Support Maintenance requirements for Aerosol Generator, Insecticide, Non-Thermal, Ultra-Low Volume (MOD XKA).

**ORGANIZATIONAL, DIRECT SUPPORT AND
GENERAL SUPPORT MAINTENANCE
REPAIR PARTS AND SPECIAL TOOLS LISTS
(INCLUDING DEPOT MAINTENANCE REPAIR PARTS AND SPECIAL TOOLS LISTS)
FOR
ULV AEROSOL GENERATOR, XKA
NSN 3740-01-076-1341
Current as of 4 May 1981**

REPORTING OF ERRORS

You can help improve this manual. If you find any mistakes or if you know of a way to improve the procedures, please let us know. Mail your letter, DA Form 2028 (Recommended change to Publications and Blank Forms) or DA Form 2028-2 located in the back of this manual directly to: Commander, US Army Troop Support and Aviation Materiel Readiness Command, ATTN: DRSTSMTT, 4300 Goodfellow Boulevard, St. Louis, MO 63120. A reply will be furnished directly to you.

TABLE OF CONTENTS

		Page	Illus. Figure
Section I	Introduction	1	
Section II	Repair Parts List	7	
Group 01	Engine	7	
	Engine Assembly	6	1
	Governor Assembly	10	2
	Electrical Parts	12	3
	Starter Assembly	14	4
	Fuel Tank Assembly	16	5
	Muffler	18	6
	Air Cleaner Assembly	20	7
	Carburetor Assembly	22	8
	Internal Parts Group	24	9
	Belts	26	10
Group 02	Air Pump	29	
	Air Pump Assembly	28	11
	Filter-Nozzle Assembly	32	12
	Separator	34	13
Group 03	Control Panel	37	
	Control Panel Assembly	36	14
	Flowmeter Assembly	38	15
	Hoses, Lines, and Fittings	40	16

TABLE OF CONTENTS - Continued

	Page Figure	Illus.
Group 04 Formulation Tank Assembly	43	
Tank Assembly (Insecticide)	42	17
Inline Strainer	44	18
Tank Assembly (Flush)	46	19
Group 05 Battery Box	49	
Battery Box Assembly	48	20
Group 06 Bass	51	
Base Assembly	50	21
Section III Special Tools List (Not Applicable)		
Section IV National Stock Number and Part Number Index	52	

Section I. INTRODUCTION

1. Scope. This manual lists repair parts; test, measurement, and diagnostic equipment (TMDE), and other support equipment required for operation and performance of organizational, direct support, and general support and depot maintenance of the ULV Aerosol Generator.

2. General. This Repair Parts and Special Tools List is divided into the following sections:

a. Section II. Repair Parts List. A list of repair parts authorized for use in the performance of maintenance. The list also includes -parts which must be removed for replacement of the authorized parts. Parts lists are composed of assembly groups in ascending numerical sequence, with the parts in each group listed in NSN sequence, figure and item number sequence. Bulk materials are listed in NSN sequence, as the list group in section II.

b. Section III. Special Tools List. (Not applicable)

c. Section IV. National Stock Number and Part Number Index. A list, in ascending numerical sequence of all National Stock Numbers appearing in the listings, followed by a list, in alphanumeric sequence, of all part numbers appearing in the listings. National stock numbers and part numbers are cross-referenced to each illustration figure and item number appearance.

3. Explanation of Columns. The following provides an explanation of columns found in the Tabular listing:

a. Illustration. This column is divided as follows:

(1) Figure Number. Indicates the figure number of the illustration in which the item is shown.

(2) Item Number. The number used to identify item called out in the illustration.

b. Source, Maintenance and Recoverability (SMB).

(1) Source Code. Source codes are assigned to support items to indicate the manner of acquiring support items for maintenance, repair, or overhaul of end items. Source codes are entered in the first and second positions of the Uniform SMR Code format as follows:

Code	Definition
PA	Item procured and stocked for anticipated or known usage.
PB	Item procured and stocked for insurance purposes because essentiality dictates that a minimum quantity be available in the supply system.
PC	Item procured and stocked and which otherwise would be coded PA except that it is deteriorative in nature.
PD	Support item, excluding support equipment, procured for initial issue or outfitting and stocked only for subsequent or additional initial issues or outfittings. Not subject to automatic replenishment.
PE	Support equipment procured and stocked for initial issue or outfitting to specified maintenance repair activities.
PF	Support equipment which will not be stocked but which will be centrally procured on demand.
PG	Item procured and stocked to provide for sustained support for the life of the equipment. It is applied to an item peculiar to the equipment which, because of probable discontinuance or shutdown of production facilities, would prove uneconomical to reproduce at a later time.
KD	An item of a depot overhaul/repair kit and not purchased separately. Depot kit defined as a kit that provides items required at the time of overhaul or repair.
KF	An item of a maintenance kit and not purchased separately. Maintenance kit defined as a kit that provides an item that can be replaced at organizational or intermediate levels of maintenance.
KB	Item included in both a depot overhaul/repair kit and a maintenance kit.

Code	Definition
MO	Item to be manufactured or fabricated at the organizational level.
MF	Item to be manufactured or fabricated at the direct support maintenance level.
MH	Item to be manufactured or fabricated at the general support maintenance level.
MD	Item to be manufactured or fabricated at the depot maintenance level.
AO	Item to be assembled at organizational level.
AF	Item to be assembled at the direct support maintenance level.
AH	Item to be assembled at general support maintenance level.
AD	Item to be assembled at depot maintenance level.
XA	Item is not procured or stocked because the requirements for the item will result in the replacement of the next higher assembly.
XB	Item is not procured or stocked. If not available through salvage, requisition.
XC	Installation drawing, diagram, instruction sheet, field service drawing, that is identified by manufacturer's part number.
XD	A support item that is not stocked. When required, item will be procured through normal supply channels.

NOTE

Cannibalization or salvage may be used as a source of supply for any items source coded above except those coded XA or AD

(2) Maintenance Code. Maintenance codes are assigned to indicate the levels of maintenance authorized to USE and REPAIR support items. The maintenance codes are entered in the third and fourth positions of the Uniform SMR Code format as follows:

(a) The maintenance code entered in the third position will indicate the lowest maintenance level authorized to remove, replace and use the support item. The maintenance code entered in the third position will indicate one of the following levels of maintenance:

Code	Application/Explanation
C	Crew or operator maintenance performed within organizational maintenance.
O	Support item is removed, replaced, used at the organizational level.
F	Support item is removed, replaced, used at the direct support level.
H	Support item is removed, replaced, used at the general support level.
D	Support items that are removed, replaced, used at depot, mobile depot, or specialized repair activity only.

(b) The maintenance code entered in the fourth position indicates whether the item is to be repaired and identifies the lowest maintenance level with the capability to perform complete repair, yet does not preclude some degree of repair which may be accomplished at a lower category of maintenance.

Code	Application/Explanation
O	The lowest maintenance level capable of complete repair of the support item is the organizational level.
F	The lowest maintenance level capable of complete repair of the support item is the direct support level.
H	The lowest maintenance level capable of complete repair of the support item is the general support level.
D	The lowest maintenance level capable of complete repair of the support item is the depot level.
L	Repair restricted to designated Specialized Repair Activity.
Z	Nonreparable. No repair is authorized.
B	No repair is authorized. The item may be reconditioned by adjusting, lubricating, etc., at the user level. No parts or special tools are procured for the maintenance of this item.

(3) Recoverability Code. Recoverability codes are assigned to support items to indicate the disposition action on unserviceable items. The recoverability code is entered in the fifth position of the Uniform SMR Code format as follows:

Recoverability
Code

Definition

- Z Nonreparable item. When unserviceable, condemn and dispose at the level indicated in position 3.
- O Reparable item. When uneconomically repairable, condemn and dispose at organizational level.
- F Reparable item. When uneconomically repairable, condemn and dispose at the direct support level.
- H Reparable item. When uneconomically repairable, condemn and dispose at the general support level.
- D Reparable item. When beyond lower level repair capability, return to depot. Condemnation and disposal not authorized below depot level.
- L Reparable item. Repair, condemnation, and disposal not authorized below depot/specialized repair activity level.
- A Item requires special handling or condemnation procedures because of specific reasons (i.e., precious metal content, high dollar value, critical material or hazardous material). Refer to appropriate manuals/directives for specific instructions.

c. National Stock Number. Indicates the National stock number assigned to the item and will be used for requisitioning purposes.

d. Part Number. Indicates the primary number used by the manufacturer which controls the design and characteristics of the item by means of its engineering drawings, specifications, standards, and inspection requirements to identify an item or range of items.

NOTE

When a stock numbered item is requisitioned, the repair part received may have a different part number than the part being replaced.

e. Federal Supply Code for Manufacturer (FSCM). The FSCM is a 5-digit numeric code listed in SB 708-42 which is used to identify the manufacturer, distributor, or Government agency; etc.

f. Description. Indicates the Federal item name and, if required, a minimum description to identify the item. Items that are included in kits and sets are listed below the name of the kit or set, with the quantity of each item in the kit or set indicated in the quantity incorporated in unit column. When the part to be used differs between serial numbers of the same model, the effective serial numbers are shown as the last line of the description. In the Special Tools List, the initial basis of issue (BOI) appears as the last line in the entry for each special tool, special TMDE, and support equipment. When density of equipments supported exceeds density spread indicated in the basis of issue, the total authorization is increased accordingly.

g. Unit of Measure (U/M). Indicates the standard of the basic quantity of the listed item as used in performing the actual maintenance function. This measure is expressed by a two-character alphabetical abbreviation (e.g., ea, in., pr, etc.). When the unit of measure differs from the unit of issue, the lowest unit of issue that will satisfy the required units of measure will be requisitioned.

h. Quantity Incorporated in Unit. Indicates the quantity of the item used in the breakout shown on the illustration figure, which is prepared for a functional group, subfunctional group, or an assembly. A "V" appearing in this column in lieu of a quantity indicates that no specific quantity is applicable (e.g., shims, spacers, etc.).

4. Special Information.

a. Repair parts kits and gasket sets appear as the last entries in the repair parts listing for the figure in which its parts are listed as repair parts or are listed at the end of the repair parts listing for the last figure containing parts of the kit.

b. In the parts list, some items are indented to show that they are a component or components of the item under which they are indented.

c. The following publication pertains to the ULV Aerosol Generator and its components:

Publication and Short Title

TM 5-3740-214-14

ULV Aerosol Generator

5. How to Locate Repair Parts.

a. When National Stock Number or Part, Number is Unknown:

(1) **First.** Using the table of contents, determine the assembly group within which the repair part belongs. This is necessary since illustrations are prepared for assembly groups, and listings are divided into the same groups.

(2) **Second.** Find the illustration covering the assembly group to which the repair part belongs.

(3) **Third.** Identify the repair part on the illustration and note the illustration figure and item number of the repair part.

(4) **Fourth.** Using the Repair Parts Listing, find the figure and item number noted on the illustration.

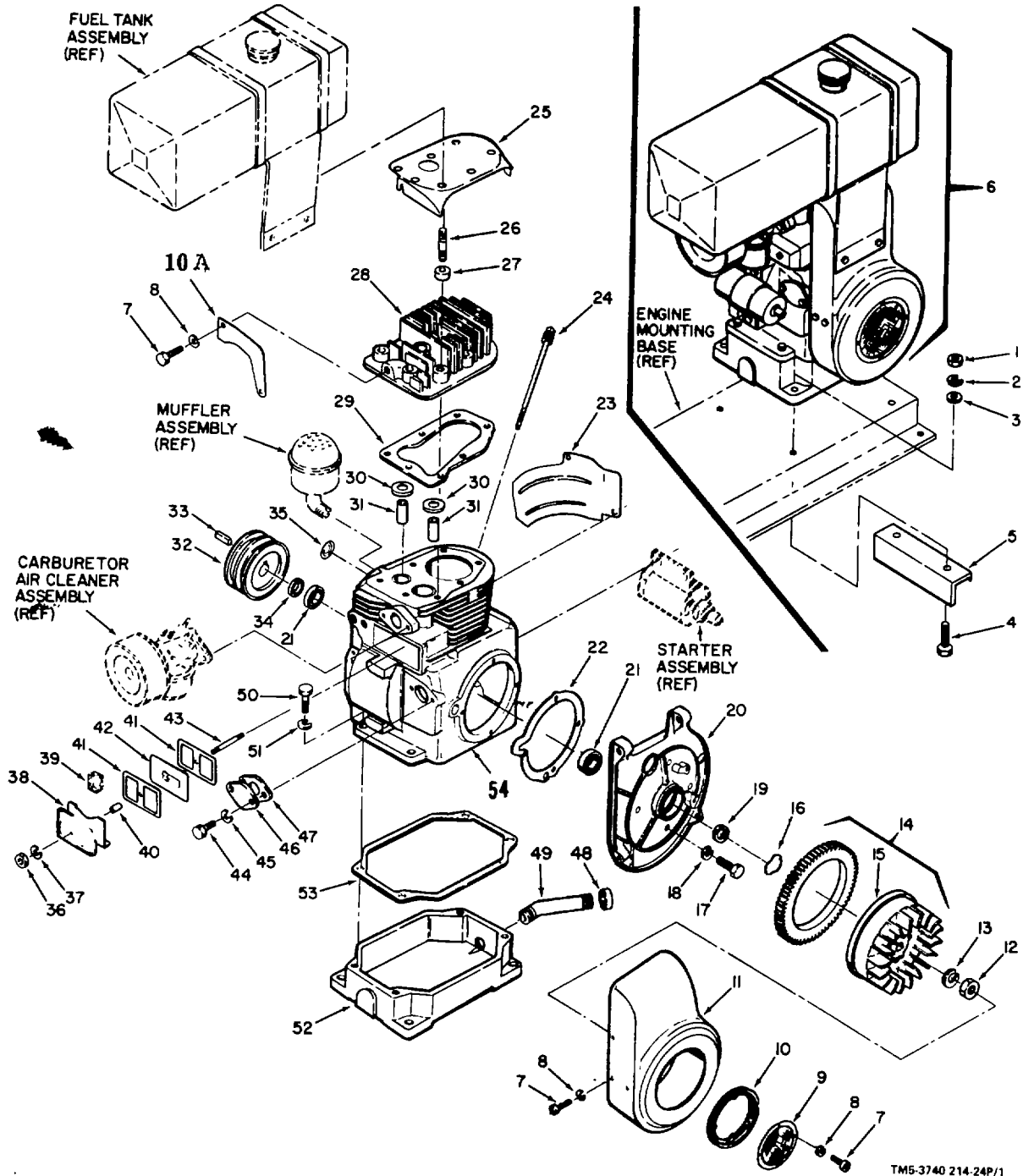
b. When National Stock Number or Part Number is Known.

(1) **First.** Using the Index of National Stock Numbers and Part Numbers, find the pertinent National stock number or part number. This index is in NIIN sequence followed by a list of part numbers in alphanumeric sequence, cross referenced to the illustration figure number and item number.

(2) **Second.** After finding the figure and item number, locate the figure and item number in the repair parts list.

6. Abbreviations.

Abbreviations	Explanation
DEG	Degree(s)
EA	Each
FT	Feet (foot)
GRP	GROUP
ID	Inside Diameter
IN	Inch(es)
LG	Long (length)
MTG	Mounting(s)
NO	Number(s)
OD	Outside Diameter



TM5-3740 214-24P/1

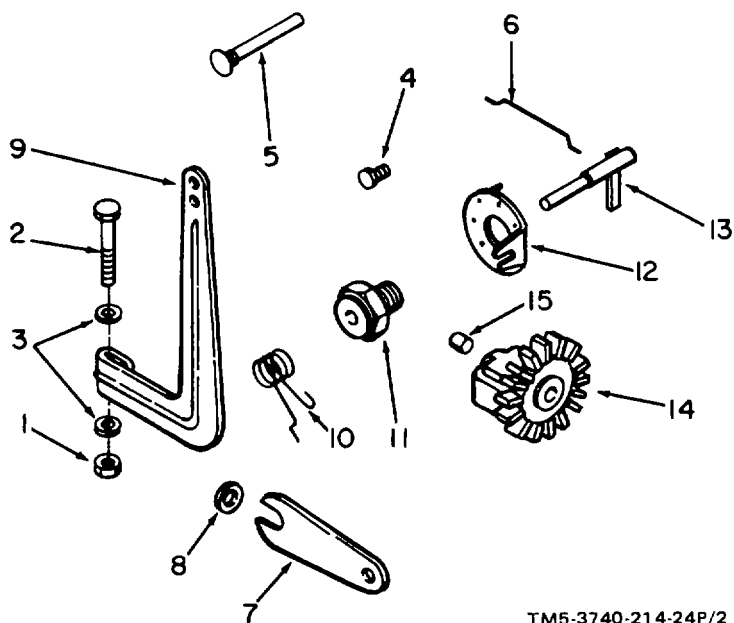
Figure 1. Engine Assembly

SECTION II

TM 5-3740-214-24P

(1) ILLUSTRATION		(2)	(3)	(4)	(5)	(6)	(7)	(8)
(a) FIG NO.	(b) ITEM NO.	SMR CODE	NATIONAL STOCK NUMBER	PART NUMBER	FSCM	DESCRIPTION	U/M	QTY INC IN UNIT
						USABLE ON CODE		
						GROUP 01 - ENGINE		
1	1	PAFZZ	5310-00-880-7746	MS51968-5	96906	NUT, PIN, HEXAGON	EA	4
1	2	PAFZZ	5310-00-407-9566	MS35338-45	96906	WASHER, LOCK	EA	4
1	3	PAFZZ	5310-00-087-7493	MS27183-13	96906	WASHER, FLAT	EA	9
1	4	PAFZZ	5305-00-225-9081	M590725-36	96906	SCREW, CAP, HEXAGON HEAD	EA	9
1	5	XCFZZ		3006	56215	STIFFNER	EA	2
1	6	PBFFF		2161	56215	ENGINE ASSEMBLY	EA	1
1	7	PAFZZ	5305-00-068-0501	MS90725-5	96906	SCREW, CAP, HEXAGON	EA	11
1	8	PAFZZ	5310-00-550-1130	MKS35333-40	96906	WASHER, LOCK	EA	11
1	9	XDFZZ		234392	52845	SCREEN, GRASS	EA	1
1	10	XDFZZ		231142	52845	RING, GRASS SCREEN	EA	1
1	10A					BRACKET	EA	1
1	11	XDFZZ		231804	52845	HOUSING, BLOWER	EA	1
1	12	XCFZZ		X-119-14	52845	NUT, SELF-LOCKING	EA	1
1	13	XCFZZ		X-25-15	52845	WASHER, LOCK	EA	1
1	14	XBFFZ		A-234598	52845	FLYWHEEL ASSEMBLY	EA	1
1	15	XAFZZ		42-025-17	52845	PLYWHEEL	EA	1
1	16	XBFFZ		230148	52845	WASHER, TENSION	EA	1
1	17	PAFZZ	5306-00-225-8499	MS590725-34	96906	SCREW, CAP, HEXAGON HEAD	EA	4
1	18	PAFZZ	5310-00-959-4679	M5S35340-45	96906	WASHER, LOCK	EA	4
1	19	PBFZZ		X-583-1	52845	SEAL, FRONT OIL	EA	1
1	20	XBFFZ		231737	52845	PLATE, BEARING	EA	1
1	21	XBFFZ		231625	52845	BEARING, BALL	EA	2
1	22	XBFFZ		230112	52845	GASKET, BEARING P L A T E	EA	1
1	23	XBFFZ		230054	52845	BAFFLE, CYLINDER	EA	1
1	24	XBOZZ		230092	52845	DIPSTICK	EA	1
1	25	XBFFZ		234402	52845	BAFFLE, HEAD.	EA	1
1	26	PAFZZ	5307-0-013-7888	MS51864-103-13	96906	STUD	EA	3
1	27	XBFFZ		234847	52845	SPACER	EA	3
1	28	XAFZZ		41-015-02	52845	HEAD, CYLINDER	EA	1
1	29	PBFZZ		41-041-05	52845	GASKET, HEAD	EA	1
1	30	XAFZZ		230007-5	52845	GUIDE, VALVE	EA	2
1	31	XAFZZ		230170	52845	INSERT, SEAT	EA	2
1	32	XBFFZ		3X559	71176	PULLEY	EA	1
1	33	XBFFZ		3024	56215	PULLEY, SQUARE	EA	1
1	34	XCFZZ		X-583-2	52845	SEAL, OIL, REAR	EA	1
1	35	XBFFZ		X-230-11	52845	PLUG, EXPANSION	EA	1
1	36	PAFZZ	5310-00-761-6882	MS51967-2	96906	NUT, PLAIN, HEXAGON	EA	1
1	37	PAFZZ	5310-00-582-5965	M535338-44	96906	WASHER, LOCK	EA	1
1	38	XBFFZ		A-234678	52845	VALVE COVER ASSEMBLY	EA	1

(1) ILLUSTRATION		(2)	(3)	(4)	(5)	(6) DESCRIPTION	(7)	(8)
(a) FIG NO.	(b) ITEM NO.	SMR CODE	NATIONAL STOCK NUMBER	PART NUMBER	FSCM	USABLE ON CODE	U/M	QTY INC IN UNIT
1	39	PBFZZ		231419	52845	FILTER	EA	1
1	40	PBFZZ		230046	52845	SEAL, BREATHER	EA	1
1	41	PCFZZ		230048	52845	GASKET, VALVE COVER	EA	2
1	42	PCFZZ		0066	84523	BREATHER	EA	1
1	43	XBFZZ		230043	52845	STUD, VALVE COVER	EA	1
1	44	PAFZZ	5305-00-068-0500	MS90725-3	96906	SCREW, CAP, HEXAGON HEAD	EA	2
1	45	PAFZZ	5310-00-582-5965	MS35338-44	96906	WASHER, LOCK	EA	2
1	46	XBFZZ		240282	52845	COVER, PUMP PAD	EA	1
1	47	PBFZZ		41-041-01	52845	GASKET, PUMP PAD	EA	1
1	48	XBFZZ		1124-1/2	54578	CAP, PIPE	EA	1
1	49	XBFZZ		2168	56215	PIPE, OIL DRAIN	EA	1
1	50	PAFZZ	5305-00-071-2242	MS90725-9	96906	SCREW, CAP, HEXAGON HEAD	EA	4
1	51	PAFZZ	5310-00-407-9566	MS35338-45	96906	WASHER, LOCK	EA	4
1	52	XBFZZ		230021	52845	BASE, OIL PAN	EA	1
1	53	PFFZZ		41-041-05	52845	GASKET, PAN	EA	1
1	54	XAFZZ		41-005-01	52845	BLOCK, CYLINDER	EA	1



TM5-3740-214-24P/2

Figure 2. Governor Assembly

(1) ILLUSTRATION		(2)	(3)	(4)	(5)	(6)	(7)	(8)
(a) FIG NO.	(b) ITEM NO.	SMR CODE	NATIONAL STOCK NUMBER	PART NUMBER	FSCM	DESCRIPTION USABLE ON CODE	U/M	QTY INC IN UNIT
2	1	PAFZZ	5310-00-997-1888	MS35649-2252	96906	.NUT, PLAIN, HEXAGON	EA	1
2	2	PAFZZ	5305-00-225-3839	MS90725-8	96906	.SCREW, CAP, HEXAGON HEAD	EA	1
2	3	PAFZZ	5310-00-809-4058	MS27183-10	96906	.WASHER, FLAT	EA	2
2	4	XFBPZ		X-67-5	52845	.SCREW, MACHINE	EA	1
2	5	XBFZZ		231355	52845	.PIN, GOVERNOR STOP	EA	1
2	6	XBFZZ		230078	52845	.LINKAGE, GOVERNOR	EA	1
2	7	XBFZZ		230478	52845	.BRACKET, SPEED CONTROL	EA	1
2	8	XBFZZ		X-25-58	52845	.WASHER, STEEL	EA	1
2	9	XBFZZ		232614	52845	.LEVER, GOVERNOR	EA	1
2	10	XBFZZ		232617	52945	.SPRING, GOVERNOR	EA	1
2	11	XBFZZ		230476	52845	.BUSHING, GOVERNOR	EA	1
2	12	XBFZZ		230149	52845	.DISC, REGULATING	EA	1
2	13	XBPZZ		230540-S	52845	.SHAFT, GOVERNOR	EA	1
2	14	XBFZZ		A-235157	52845	.GEAR, GOVERNOR	EA	1
2	15	XBFZZ		230125-S	52845	.SHAFT, GOVERNOR	EA	1

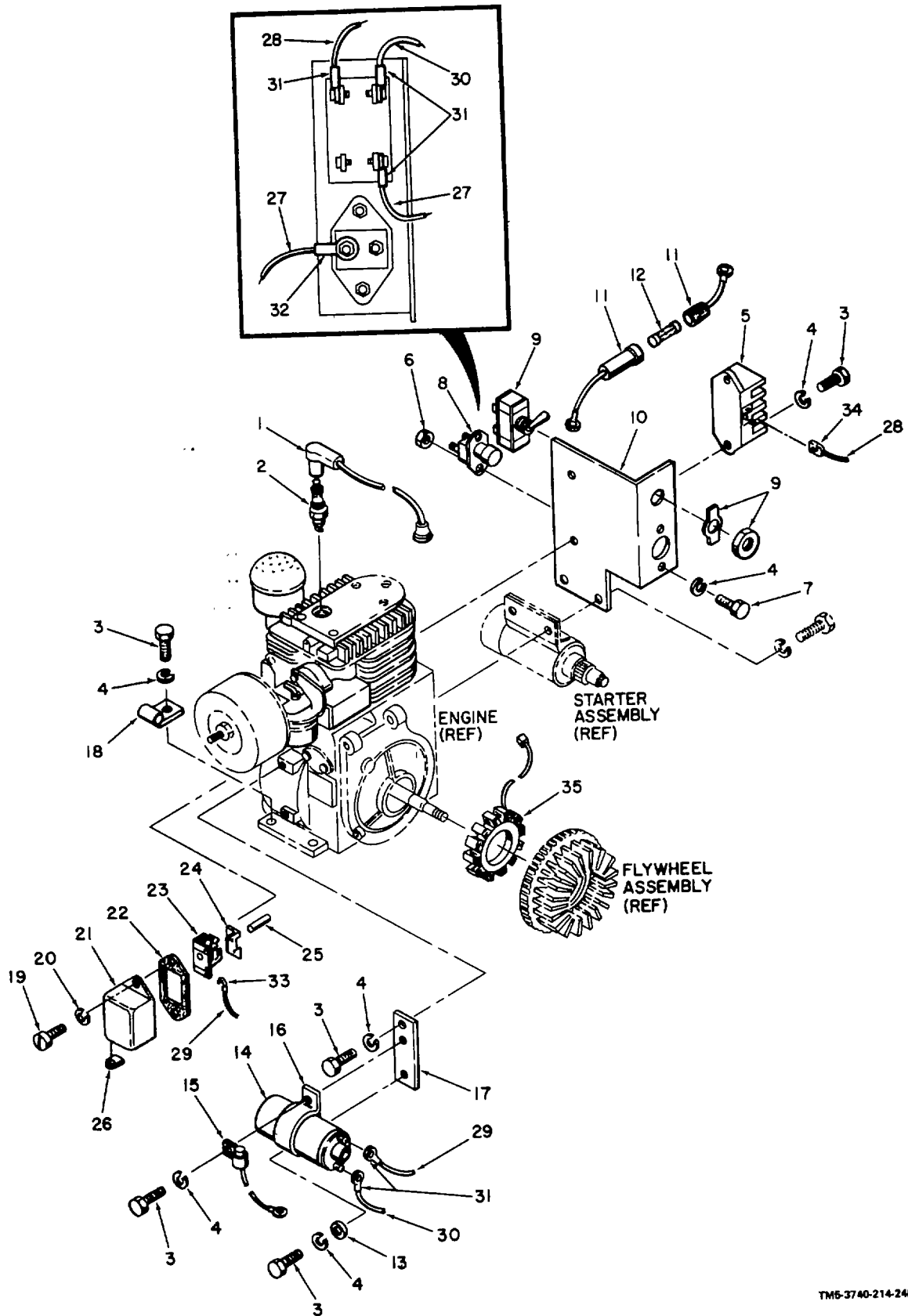
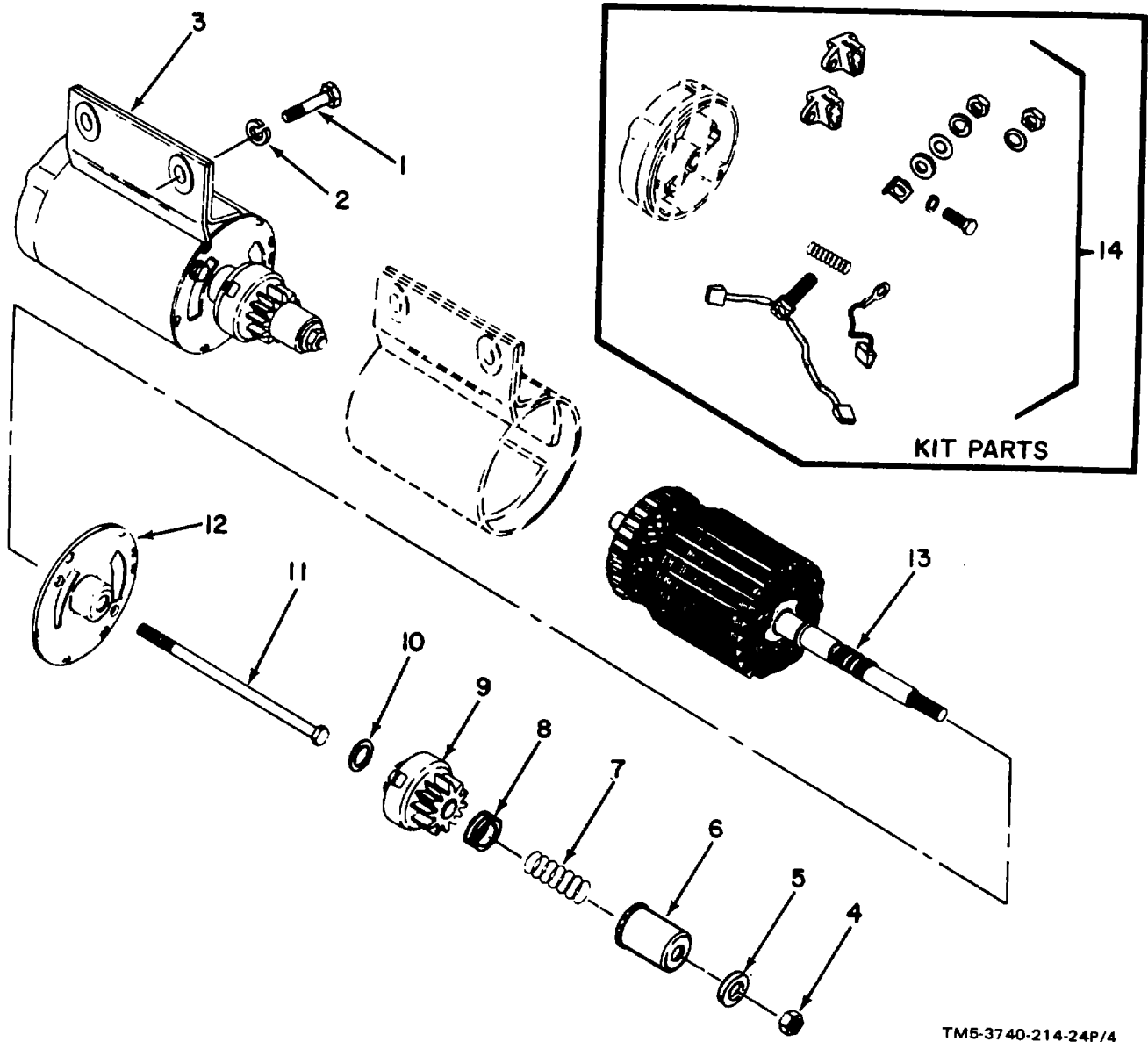


Figure 3. Electrical Parts

(1) ILLUSTRATION		(2)	(3)	(4)	(5)	(6)	(7)	(8)
(a) FIG NO.	(b) ITEM NO.	SMR CODE	NATIONAL STOCK NUMBER	PART NUMBER	FSCM	DESCRIPTION USABLE ON CODE	U/M	QTY INC IN UNIT
3	1	PAFZZ		238057	52845	CABLE, SPARK PLUG	EA	1
3	2	PAFZZ		51-132-02	52S45	PLUG, SPARK	EA	1
3	3	PAFZZ	5305-00-068-0501	MS90725-5	96906	SCREW, CAP HEXAGON HEAD	EA	5
3	4	PAFZZ	5310-00-582-5965	MS35338-44	96906	WASHER, LOCK	EA	7
3	5	PBFZZ		237335	52845	RECTIFIER-REGULATOR	EA	1
3	6	PAFZZ	5310-00-997-1889	MS35649-2252	96906	NUT, PLAIN, HEXAGON	EA	1
3	7	PAFZZ	5305-00-068-0501	MS90725-5	96906	SCREW, CAP HEXAGON HEAD	EA	1
3	8	PBFZZ	230442		52845	SNITCH.STARTING	EA	1
3	9	XBPZZ		238011	52845	SNITCH, IGNITION	EA	1
3	10	XBFFZ		238013	52845	PANELINSTRUMENT	EA	1
3	11	XBFFZ		41-323-02	52845	FUSE HOLDER., INLINE	EA	1
3	12	PAOZZ		AG00-30	71400	FUSE. INLINE, 15 AMP	EA	1
3	13	PAFZZ	5310-00-809-4058	MS27183-10	96906	WASHER, FLAT	EA	1
3	14	PBFZZ		47-150-01	52845	COIL.IGNITION	EA	1
3	15	PAFZZ		230722	52845	CONDENSER	EA	1
3	16	XBFFZ		231879	52845	BRACKET.IGNITION COIL	EA	1
3	17	XBFFZ		234994	52845	PLATE, COIL	EA	1
3	18	XBPFZ		230249	52845	CLIP	EA	1
3	19	PAFZZ	5305-00-855-0958	MS24629-45	96906	SCREW, TAPPING, THREAD	EA	2
3	20	PAFZZ	5310-00-576-5752	MS35333-39	96906	WASHER, LOCK	EA	2
3	21	XAFZZ		232535	52845	COVER, BREAKER POINT	EA	1
3	22	XCFZZ		220174	52845	GASKET, COVER	EA	1
3	23	PAFZZ		47-150-01	52845	BREAKER	EA	1
3	24	XBFFZ		220476	52845	BRACKET.BREAKER POINTS	EA	1
3	25	XBFFZ		X-389-2N	52845	ROD, BREAKER,	EA	1
3	26	XAFZZ		220297	52845	GRO	EA	1
3	27	PAFZZ		59079R-3.25	77060	WIRE, ELECTRIC	FT	1
3	28	PAFZZ		59079R-4.75	77060	WIRE, ELECTRIC	FT	1
3	29	PAFZZ		59079R-12	77060	WIRELECTRIC	FT	1
3	30	PAFZZ		59079R-18	77060	WIRE.ELECTRIC	FT	1
3	31	PAFZZ	5940-00-644-8713	MS25036-8	96906	TERMINAL RING, INSULATION	EA	5
3	32	PAFZZ		MS25036-9	96906	TERMINAL RING INSULATION H	EA	1
3	33	PAFZZ		60416-1	00779	TRENINAL.SLOTTR	EA	1
3	34	PAFZZ		320381	00779	TEINAL.SPAD	EA	1
3	35	XBFFZ		237878	52845	SATORALTRNATO	EA	1



TM5-3740-214-24P/4

Figure 4. Starter Assembly

SECTION II

TM 5-3740-214-24P

(1) ILLUSTRATION		(2)	(3)	(4)	(5)	(6)	(7)	(8)
(a) FIG NO.	(b) ITEM NO.	SMR CODE	NATIONAL STOCK NUMBER	PART NUMBER	FSCM	DESCRIPTION USABLE ON CODE	U/M	QTY INC IN UNIT
4	1	PAFZZ	5305-00-269-2803	MS90726-60	96906	.SCREW, CAP, HEXAGON HEAD	EA	2
4	2	PAFZZ		MS35338-46	96906	.SPACER, SLEEVE.....	EA	2
4	3	PBFHH		41-098-01	52845	.STARTER ASSEMBLY	EA	1
4	4	XBFZZ		237644	52845	..NUT, STOP.....	EA	1
4	5	XBFZZ		237647	52845	..SPACER, DUST COVER.....	EA	1
4	6	XBFZZ		41-096-01	52845	..COVER, DUST.....	EA	1
4	7	XBFZZ		237357	52845	..SPRING, ANTI-DRIFT	EA	1
4	8	XBFZZ		237645	52845	..SPACER, STOP GEAR.....	EA	1
4	9	XAFZZ		41-755-04	52845	..DRIVE, STARTER	EA	1
4	10	XBFZZ		237363	52845	..WASHER, THRUST	EA	1
4	11	XAFZZ		237649	52845	..BOLT, THRU	EA	2
4	12	XAFZZ		237650	52845	..CAP, DRIVE END.....	EA	1
4	13	XAFZZ		237364	52845	..ARMATURE.....	EA	1
4	14	PBFZZ		237368	52845	.KIT, REPAIR, STARTER	EA	1
4		KFHZZ	237367	52845	..BRUSH AND SPRING	EA	1	
4		KFHZZ	237762	52845	..BRUSH HOLDER.....	EA	1	
4		KFHZZ	237761	52845	..KIT, REPAIR.....	EA	1	

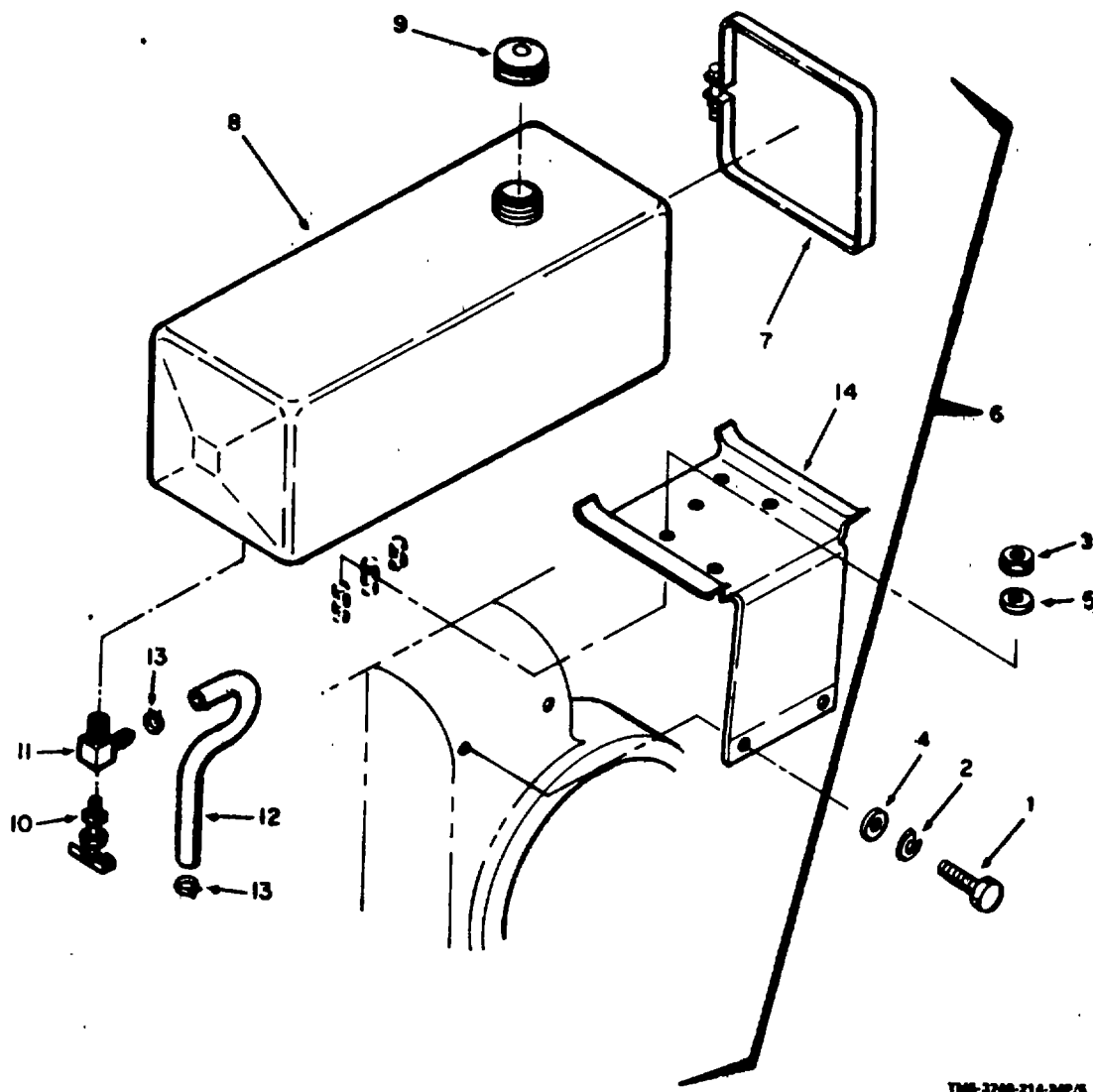


Figure 5. Fuel Tank Assembly

SECTION II

TM 5-3740-214-24P

(1) ILLUSTRATION		(2)	(3)	(4)	(5)	(6)	(7)	(8)
(a) FIG NO.	(b) ITEM NO.	SMR CODE	NATIONAL STOCK NUMBER	PART NUMBER	FSCM	DESCRIPTION USABLE ON CODE	U/M	QTY INC IN UNIT
5 1	PAFZZ	5305-00-068-0500		MS90725-3	96906	.SCREW, CAP, HEXAGON HEAD	EA	2
5 2	PAFZZ	5310-00-532-5965		MS35338-44	96906	.WASHER, LOCK	EA	2
5 3	PAFZZ	5310-00-809-4058		MS27183-10	96906	.NUT, HEXAGON.....	EA	2
5 4	PAFZZ	5310-00-997-1888		MS35649-2252	96906	.WASHER, LOCK	EA	3
5 5	PAFZZ	5310-00-550-1130		MS35333-40	96906	.WASHER, LOCK, I.T.....	EA	3
5 6	XBFZZ	5940-00-143-4780		21601	56215	.FUEL TANK ASSEMBLY	EA	1
5 7	XBFZZ		A-236938	52845		..STRAP, TANK.....	EA	2
5 8	XBFZZ		H1-065-01	56215		..TANK, FUEL	EA	1
5 9	XBFZZ		220853	52845		...CAP, FUEL TANK	EA	1
5 10	XBFZZ		220764	52845		..VALVE, FUEL.....	EA	1
5 11	XBFZZ		X-391-1	52845		..CONNECTOR.....	EA	1
5 12	PBOZZ		ZA-104-6	3032		..HOSE, FUEL LINE.....	EA	1
5 13	PBOZZ		UM5008	56215		..CLAMP, HOSE	EA	2
5 14	XBFZZ		234767	52845		..BRACKET, FUEL TANK.....	EA	1

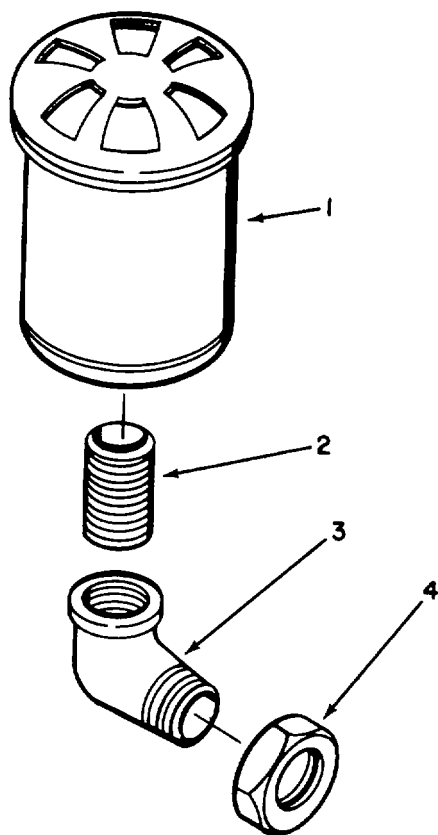


Figure 6. Muffler

SECTION II

TM 5-3740-214-24P

(1)		(2)	(3)	(4)	(5)	(6)	(7)	(8)
ILLUSTRATION		SMR CODE	NATIONAL STOCK NUMBER	PART NUMBER	FSCM	DESCRIPTION <i>USABLE ON CODE</i>	U/M	QTY INC IN UNIT
(a) FIG NO.	(b) ITEM NO.							
6 1	PAOZZ		230410	52845		.MUFFLER	EA	1
6 2	XBOZZ		343-1	54578		.NIPPLE, CLOSE, 1 INCH	EA	1
6 3	XBOZZ		1103-1	54578		.ELBOW, STREET, 90 DEGREE.....	EA	1
6 4	XBOZZ		1134-1	54578		.NUT, HEXAGON, 1 INCH	EA	1

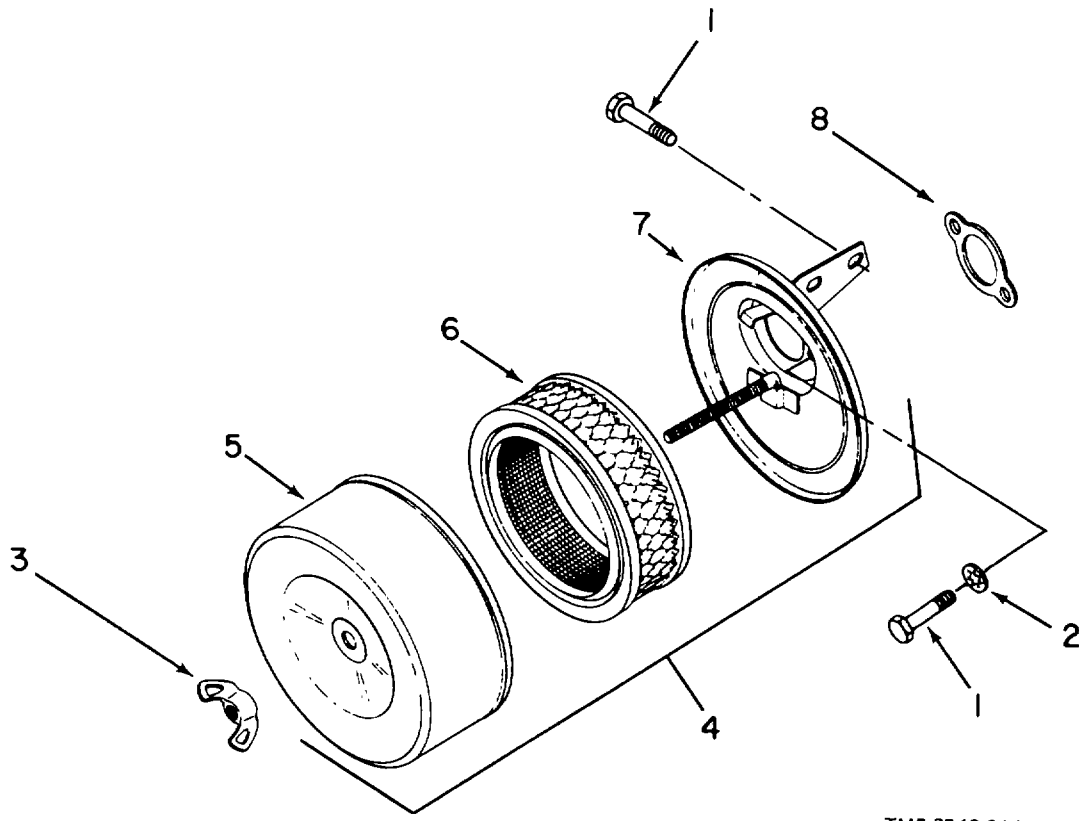


Figure 7. Air Cleaner Assembly

SECTION II

TM 5-3740-214-24P

(1) ILLUSTRATION		(2)	(3)	(4)	(5)	(6)	(7)	(8)
(a) FIG NO.	(b) ITEM NO.	SMR CODE	NATIONAL STOCK NUMBER	PART NUMBER	FSCM	DESCRIPTION USABLE ON CODE	U/M	QTY INC IN UNIT
7 1	PBOZZ	5305-00-757-8287		MS51851-43	96906	.SCREW, CAP, HEXAGON	EA	4
7 2	PAFZZ	5310-00-550-1130		MS35333-40	96906	.WASHER, LOCK, I.T.....	EA	2
7 3	PAOZZ		X-276-7	52845		.NUT, WING	EA	1
7 4	XBOZZ		A-231886	52845		.AIR CLEANER ASSEMBLY	EA	1
7 5	XAOZZ		231855	52845		..COVER, AIR CLEANER	EA	1
7 6	PAOZZ		231847	52845		..ELEMENT, AIR CLEANER	EA	1
7 7	XAOZZ		231857	52845		..BASE, AIR CLEANER	EA	1
7 8	PBOZZ		220537	52845		..GASKET, INTAKE.....	EA	1

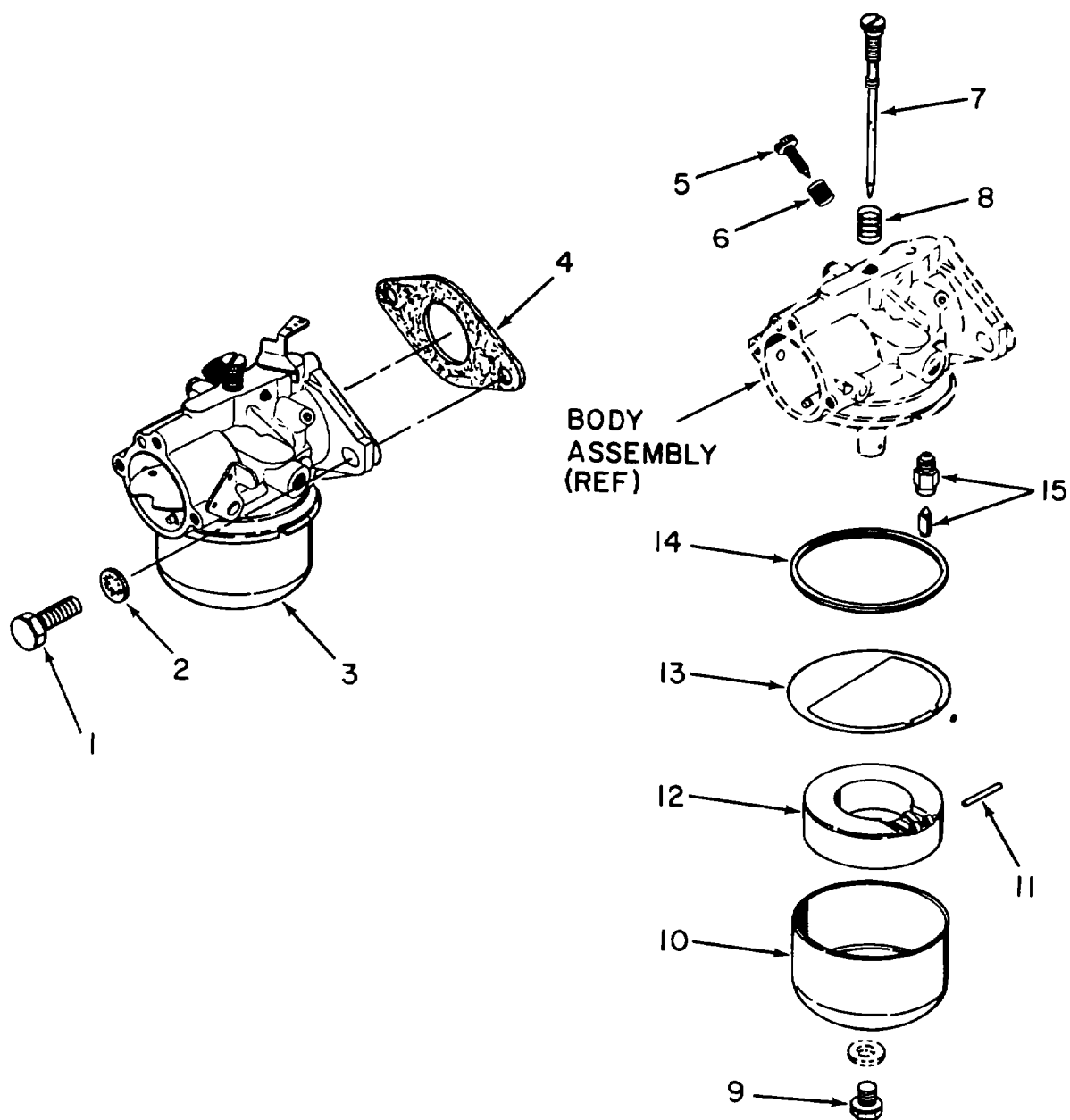
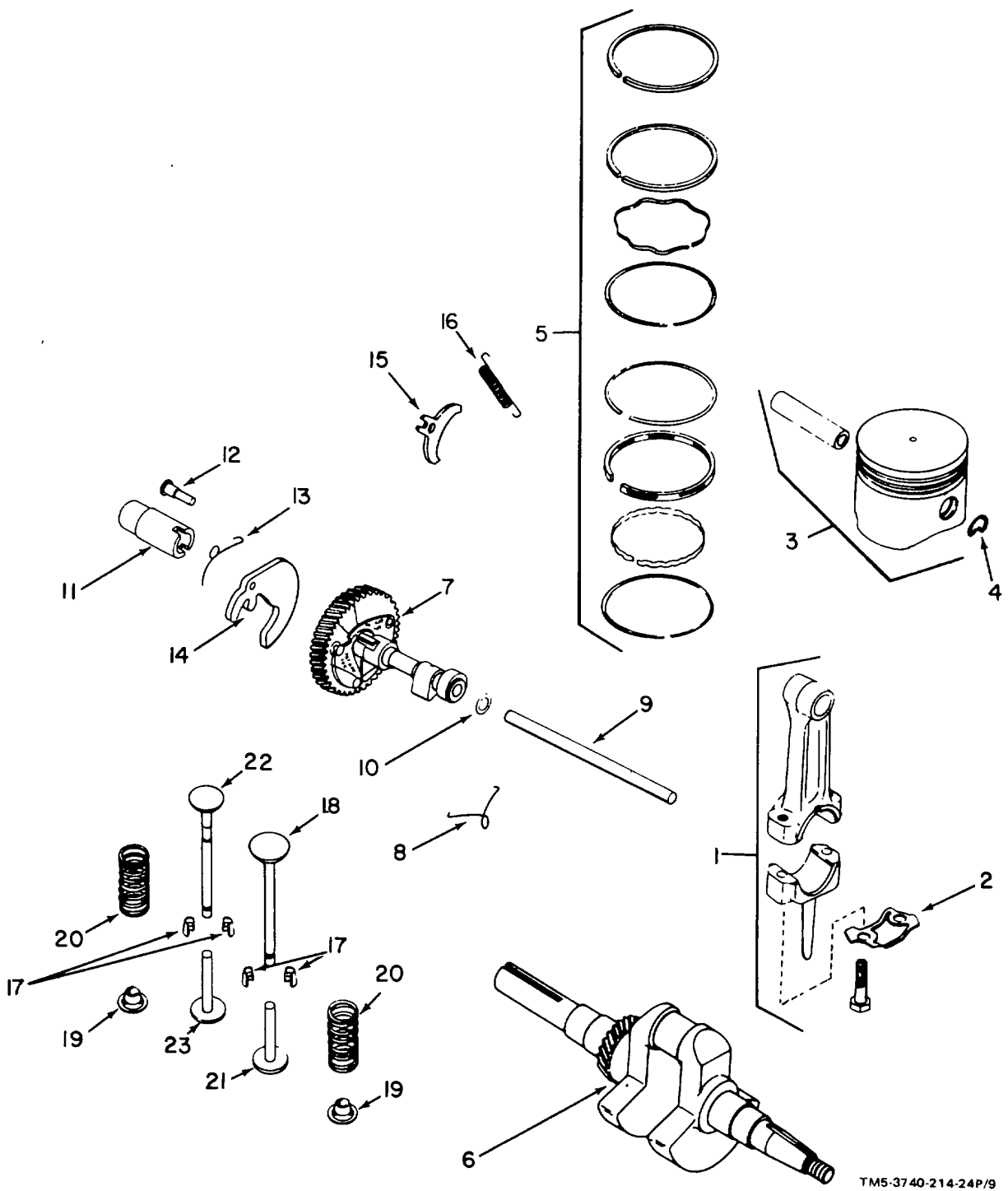


Figure 8. Carburetor Assembly

SECTION II

TM 5-3740-214-24P

(1) ILLUSTRATION		(2)	(3)	(4)	(5)	(6)	(7)	(8)
(a) FIG NO.	(b) ITEM NO.	SMR CODE	NATIONAL STOCK NUMBER	PART NUMBER	FSCM	DESCRIPTION USABLE ON CODE	U/M	QTY INC IN UNIT
8 1	PAOZZ	5305-00-068-0502		MS90725-6	96906	.SCREW, CAP, HEXAGON HEAD	EA	2
8 2	PAOZZ	5310-00-167-0721		MS35333-41	96906	.WASHER, LOCK	EA	2
8 3	PAOFF		C-231738	52845		.CARBURETOR ASSEMBLY.....	EA	1
8 4	PAOZZ		210223	52845		.GASKET, CARBURETOR	EA	1
8 5	PAFZZ		200438	52845		.NEEDLE, IDLE ADJUST.....	EA	1
8 6	XBFZZ		200380	52845		.SPRING, IDLE ADJUST.....	EA	1
8 7	XBFZZ		232635	52845		.NEEDLE, MAIN ADJUST	EA	1
8 8	XBFZZ		200383	52845		.SPRING, MAIN ADJUST	EA	1
8 9	XBFZZ		200420	52845		.SCREW, BOWL RETAINER	EA	1
8 10	XAFZZ		200418	52845		.BOWL, FUEL.....	EA	1
8 11	KFFZZ		200376	52845		.PIN, FLOAT HINGE.....	EA	1
8 12	XAFZZ		200408	52845		.FLOAT	EA	1
8 13	XFFZZ		200439	52845		.GASKET, ANTI-SPLASH	EA	1
8 14	KFFZZ		200375	52845		.GASKET, BOWL	EA	1
8 15	XFFZZ		200443	52845		.NEEDLE AND SEAT	EA	1
8	PAFZZ		231555	52845		.KIT, REPAIR	EA	1



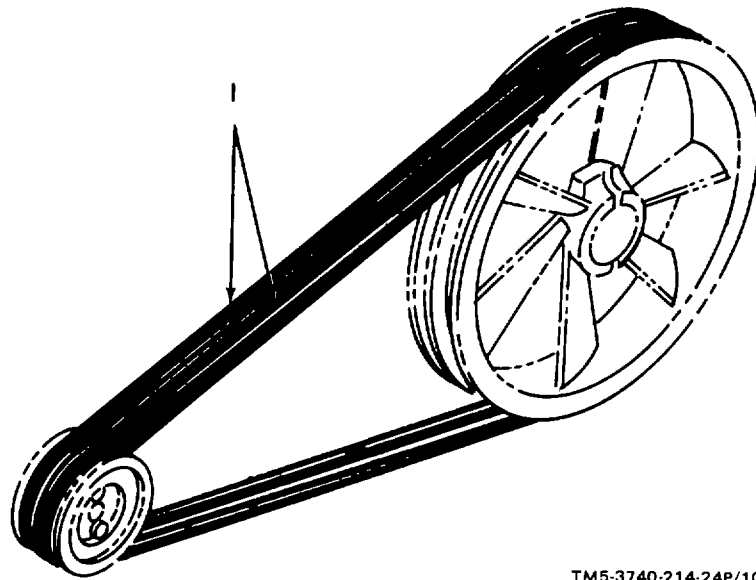
TM5-3740-214-24P/9

Figure 9. Internal Parts Group

SECTION II

TM 5-3740-214-24P

(1) ILLUSTRATION		(2)	(3)	(4)	(5)	(6)	(7)	(8)
(a) FIG NO.	(b) ITEM NO.	SMR CODE	NATIONAL STOCK NUMBER	PART NUMBER	FSCM	DESCRIPTION USABLE ON CODE	U/M	QTY INC IN UNIT
9 1	XAFZZ		A-231801	52845		.ROD, CONNECTING ASSEMBLY	EA	1
9 2	XBFZZ		230525	52845		..LOCK, CONNECTING ROD.....	EA	1
9 3	XAFZZ		A-234950	52845		.PISTON ASSEMBLY	EA	1
9 4	XBFZZ		230004	52845		..RETAINER, PIN	EA	2
9 5	KBFZZ		232575	52845		.RING SET	EA	1
9 6	XDFZZ		231761	52845		.CRANKSHAFT (STD)	EA	1
9 7	XDFZZ		A-230155-S	52845		.CAMSHAFT	EA	1
9 8	XDFZZ		47-089-01	52845		..SPRING, ACTUATING.....	EA	1
9 9	XDFZZ		230053	52845		..PIN, CAMSHAFT	EA	1
9 10	XBFZZ		230293	52845		.SPACER, CAMSHAFT.....	EA	3
9 11	XDFZZ		230690	52845		.CAM, IGNITION.....	EA	1
9 12	XDFZZ		231730	52845		.PIN, FLYWEIGHT.....	EA	2
9 13	XDFZZ		275267	52845		.SPRING, GOVERNOR.....	EA	2
9 14	XAFZZ		230097	52845		.FLYWEIGHT, SPARK ADVANCE	EA	2
9 15	XDFZZ		232659	52845		.WEIGHT, STABILIZING.....	EA	1
9 16	XDFZZ		230087	52845		.SPRING, SPARK ADVANCE	EA	1
9 17	XDFZZ		41-755-01	52845		.KEEPER, VALVE.....	EA	2
9 18	XDFZZ		230008	52845		.VALVE, INTAKE	EA	1
9 19	XDFZZ		230011	52845		.RETAINER, V, SPRING	EA	2
9 20	XDFZZ		230010	52845		.SPRING, VALVE.....	EA	2
9 21	XDFZZ		230013	52845		.TAPPET, INTAKE VALVE.....	EA	1
9 22	XDFZZ		230710	52845		.EXHAUST VALVE.....	EA	1
9 23	XDFZZ		232777	52845		.TAPPET, EXHAUST VALVE.....	EA	1



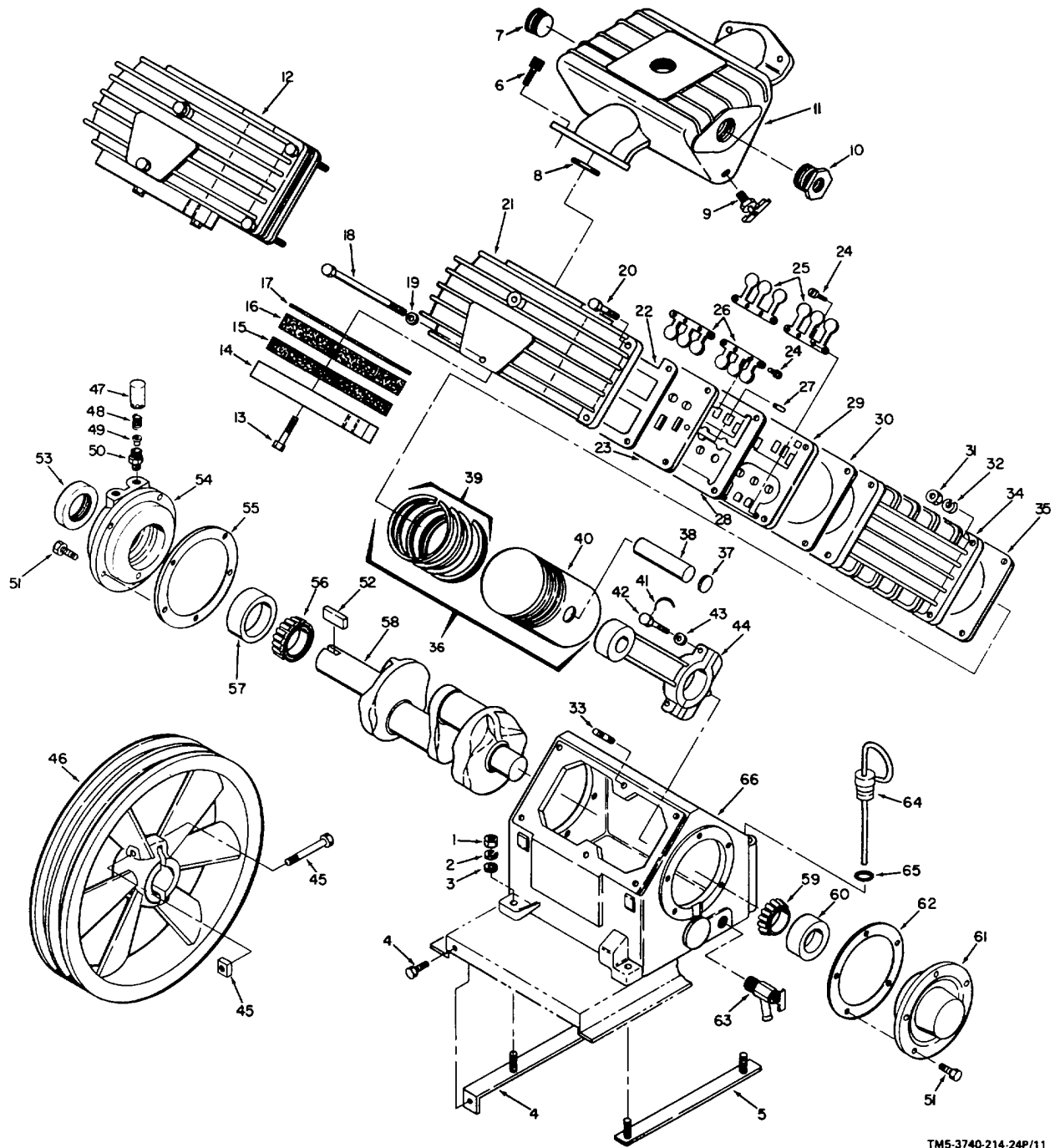
TM5-3740-214-24P/10

Figure 10. Belts

SECTION II

TM 5-3740-214-24P

(1) ILLUSTRATION		(2)	(3)	(4)	(5)	(6)	(7)	(8)
(a) FIG NO.	(b) ITEM NO.	SMR CODE	NATIONAL STOCK NUMBER	PART NUMBER	FSCM	DESCRIPTION <i>USABLE ON CODE</i>	U/M	QTY INC IN UNIT
101	PBFZZ		5L-710	71176		BELT, DRIVE.....	EA	2



TM5-3740-214-24P/11

Figure 11. Air Pump Assembly

SECTION II

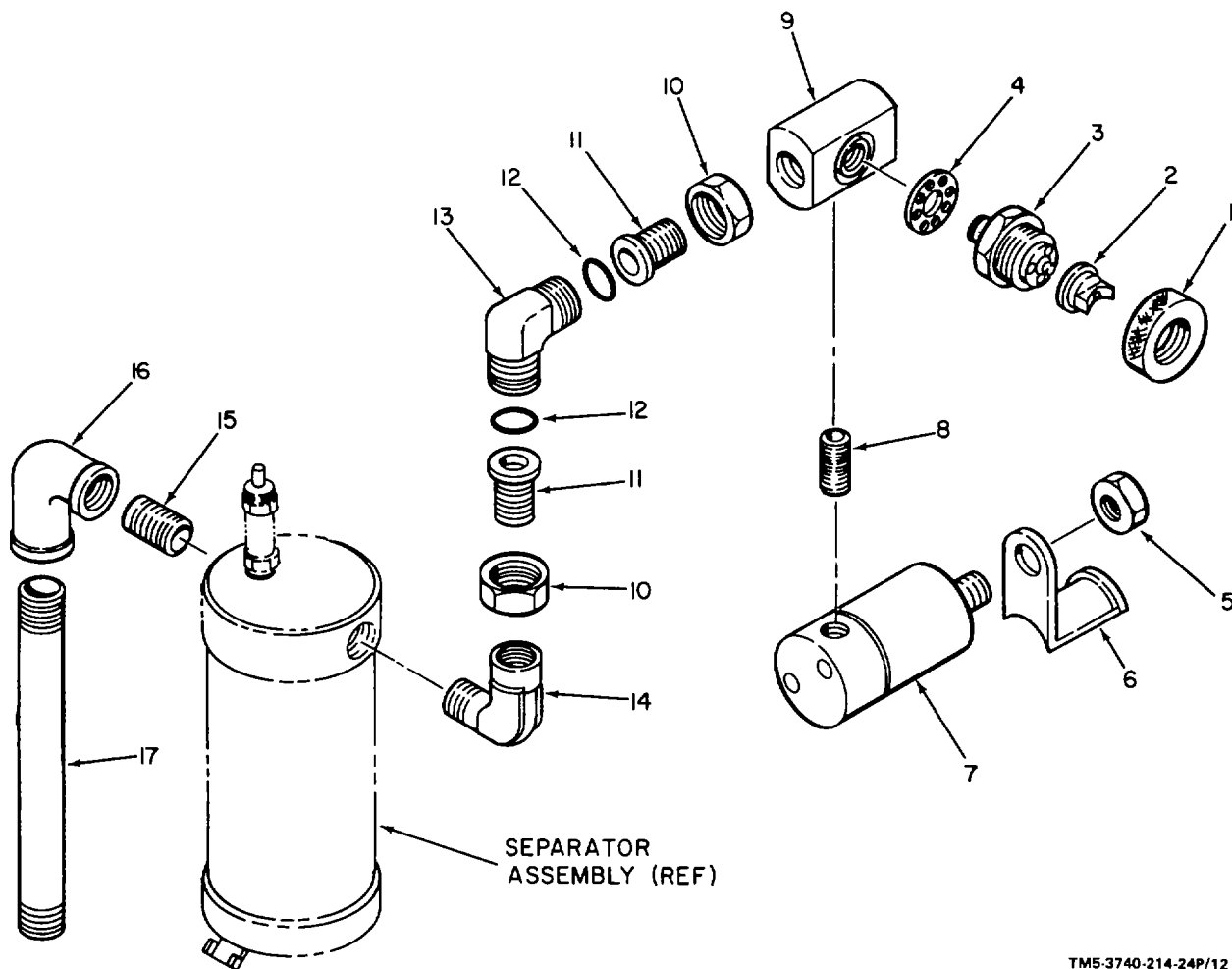
TM 5-3740-214-24P

(1) ILLUSTRATION		(2)	(3)	(4)	(5)	(6)	(7)	(8)
(a) FIG NO.	(b) ITEM NO.	SMR CODE	NATIONAL STOCK NUMBER	PART NUMBER	FSCM	DESCRIPTION USABLE ON CODE	U/M	QTY INC IN UNIT
GROUP 02 - AIR PUMP								
11	1	PAFZZ	5310-00-880-7746	MS51968-5	96906	NUT, PLAIN, HEXAGON.....	EA	4
11	2	PAFZZ	5310-00-407-9566	MS35338-45	96906	WASHER, LOCK.....	EA	4
11	3	PAFZZ	5310-00-081-4219	MS27183-12	96906	WASHER, FLAT.....	EA	4
11	4	XCFZZ		3000A	56215	BELT TENSIONER ASSEMBLY.....	EA	1
11	5	XBFZZ		3004A	56215	BOLT PLATE ASSEMBLY.....	EA	1
11		XBFZZ		3036	56215	AIR PUMP ASSEMBLY.....	EA	1
11	6	PAFZZ		2136	01605	.SCREW, PULSATION TANK.....	EA	4
11	7	XBFZZ		1923	01605	.PLUG.....	EA	1
11	8	PBFZZ		2098	01605	.PACKING, PREFORMED.....	EA	2
11	9	XBFZZ		1459	01605	.COCK, DRAIN.....	EA	1
11	10	XCFZZ		383-3/4	54576	.BUSHING, DUPLEX.....	EA	1
11	11	XBFZZ		2099	01605	.PULSATION TANK.....	EA	1
11	12	XBFZZ		2168	01605	.HEAD ASSEMBLY.....	EA	1
11	13	PAFZZ		2131	01605	..SCREW, MACHINE.....	EA	3
11	14	XBOZZ		2104	01605	..FILTER RETAINER.....	EA	1
11	15	PAOZZ	4330-01-091-6965	2128	01605	..FILTER OUTER ELEMENT.....	EA	1
11	16	PAOZZ	4330-01-092-0297	2129	01605	..FILTER INNER ELEMENT.....	EA	1
11	17	PBOZZ		2130	01605	..SCREEN, FILTER.....	EA	1
11	18	PAFZZ		1528	01605	..SCREW, CAP, HEXAGON HEAD.....	EA	2
11	19	PAFZZ		1244	01605	..WASHER, FLAT, COPPER.....	EA	2
11	20	PAFZZ		1174	01605	..SCREW, CAP, HEXAGON HEAD.....	EA	4
11	21	XBFZZ		2147	01605	..HEAD.....	EA	1
11	22	PBFZZ	5330-01-091-8588	2138	01605	..GASKET, TOP.....	EA	1
11	23	XBFZZ		2149	01605	..PLATE, VALVE, INTAKE.....	EA	1
11	24	PAFZZ	5305-00-146-2663	MS51851-88	96906	..SCREW, MACHINE.....	EA	8
11	25	XBFZZ		2036	01605	..VALVE, REED, DISCHARGE.....	EA	2
11	26	XBFZZ		2035	01605	..VALVE, REED, INTAKE.....	EA	2
11	27	XBFZZ		2023	01605	..PIN, ROLL, SPIROL.....	EA	2
11	28	XBFZZ	5330-01-091-3517	2058	01605	..GASKET, MIDDLE.....	EA	1
11	29	XBFZZ		2037	01605	..PLATE, VALVE.....	EA	1
11	30	XBFZZ	5330-01-091-8589	1316	01605	..GASKET, BOTTOM.....	EA	1
11	31	PAFZZ	5310-00-829-9981	MS35649-2312	96906	.NUT, HEXAGON.....	EA	4
11	32	PAFZZ	5310-00-407-9566	MS35338-45	96906	.WASHER, LOCK.....	EA	4
11	33	PAFZZ	5307-01-013-7888	MS51864-103-18	96906	.STUD.....	EA	4
11	34	XBFZZ		1394	01605	.CYLINDER.....	EA	1
11	35	XBFZZ		1404	01605	.GASKET, CYLINDER.....	EA	1
11	36	XAFZZ		1548	01605	.PISTON ASSEMBLY.....	EA	1
11	37	XAFZZ		1210	01605	..PLUG, PIN, PISTON.....	EA	2
11	38	XAFZZ		1319	01605	..PIN, PISTON.....	EA	1
11	39	XDFZZ		1549	01605	..RINGS, PISTON (SET).....	EA	1
11	40	XBFZZ		1460	01605	..PISTON.....	EA	1
11	41	XCFZZ		1537	01605	..WIRE, CONNECTING ROD.....	EA	2

SECTION II

TM 5-3740-214-24P

(1) ILLUSTRATION (a) FIG NO.		(2) (b) ITEM NO.	(3) SMR CODE	(3) NATIONAL STOCK NUMBER	(4) PART NUMBER	(5) FSCM	(6) DESCRIPTION USABLE ON CODE	(7) U/M	(8) QTY INC IN UNIT
1142	PAFZZ			1524	01605		.SCREW, CAP, HEXAGON HEAD.....	EA	2
1143	PAFZZ			1227	01605		.WASHER, FLAT.....	EA	2
1144	XAFZZ			1399	01605		.ROD, CONNECTING.....	EA	1
1145	PAFZZ			1217	01605		BOLT AND NUT PULLEY.....	EA	2
1146	XBFZZ			1966	01605		.PULLEY, V GROOVE.....	EA	1
1147	XBFZZ			1358	01605		.CAP, BREATHER.....	EA	1
1148	XBFZZ			1291	01605		.SPRING, BREATHER.....	EA	1
1149	XBFZZ	4240-01-090	6698		1153	01605	.VALVE, BREATHER.....	EA	1
1150	XBFZZ			1357	01605		.SEAT, BREATHER.....	EA	1
1151	PAFZZ	5306-00-225	9089		MS90726-34	96906	.SCREW, CAP, HEXAGON HEAD.....	EA	10
1152	XBFZZ			1382	01605		.KEY, PULLEY.....	EA	1
1153	PBFZZ			1381	01605		.SEAL, OIL, CRANKCASE.....	EA	1
11.	54	XBFZZ		3110-01-092-4765	1397	01605	.CARRIER, FRONT.....	EA	1
1155	PBFZZ			1403	01605		.GASKET, CARRIER.....	EA	3
1156	XBFZZ	3110-00-606	1841		LM67048	60038	.CONE, BEARING.....	EA	1
1157	XBFZZ	3110-00-606	1840		LM67010	60038	.CUP, BEARING.....	EA	1
1158	XAFZZ			1400	01605		.CRANKSHAFT.....	EA	1
1159	XBFZZ			L44649	60038		.CONE, BEARING.....	EA	1
1160	XBFZZ			L44610	60038		.CUP, BEARING.....	EA	1
1161	XBFZZ			1396	01605		.CARRIER, REAR.....	EA	1
1162	PBFZZ			1402	01605		.GASKET, CARRIER.....	EA	3
1163	XBFZZ	4820-00-026	8473		211273	79470	.VALVE, DRAIN, OIL.....	EA	1
1164	XBOZZ			1521	01605		.DIPSTICK.....	EA	1
1165	XBOZZ			1265	01605		.O-RING, DIPSTICK.....	EA	1
1166	XAFZZ			1398	01605		.CRANKCASE.....	EA	1
11	KBFZZ			2206	01605		GASKET SET.....	EA	1



TM5-3740-214-24P/12

Figure 12. Filter-Nozzle Assembly

SECTION II

TM 5-3740-214-24P

(1) ILLUSTRATION		(2)	(3)	(4)	(5)	(6)	(7)	(8)
(a) FIG NO.	(b) ITEM NO.	SMR CODE	NATIONAL STOCK NUMBER	PART NUMBER	FSCM	DESCRIPTION USABLE ON CODE	U/M	QTY INC IN UNIT
12	XCOFF		30221	56215		FILTER/NOZZLE ASSY	EA	1
121	XBOOZ		1010	56215		.RING, NOZZLE.....	EA	1
122	XBFFZ		3023	56215		.CAP, AIR.....	EA	1
123	PDOZZ		3022	56215		.NOZZLE, FLUID	EA	1
124	PAOZZ		1013	56215		.GASKET, TEFLON	EA	1
125	PAOZZ	5310-00-880-7746		MS51968-5	96906	.NUT, HEXAGON.....	EA	1
126	XBOZZ		2106	56215		.BRACKET, SPRT, FLUID.....	EA	1
127	PAOZZ		B2LX68	55130		.SOLENOID ASSEMBLY.....	EA	1
128	XBOZZ		2030	56215		.NIPPLE, CLOSE.....	EA	1
129	XBOZZ		1012.2	56215		.BODY, NOZZLE.....	EA	1
1210	PAOZZ		3055	56215		.NUT	EA	1
1211	XDOZZ		3054	56215		.NIPPLE, SWIVEL ELBOW.....	EA	1
1212	PAOZZ	5330-00-166-0993		M83248/1-017	81349	.PACKING, PREFORMED.....	EA	2
1213	XBOZZ		3057	56215		.ELBOW, SWIVEL JOINT	EA	1
1214	XAOZZ		116-B-08	30327		.ELBOW, STREET, 90 DEGREES.....	EA	1
1215	XBOZZ		339-1/2	54578		.NIPPLE, CLOSE.....	EA	1
1216	XBOZZ		1161-3/4	54578		.ELBOW, REDUCING, 90 DEGREES.....	EA	1
1217	XBOZZ		3014	56215		.NIPPLE, PIPE, 3/4 INCH	EA	1

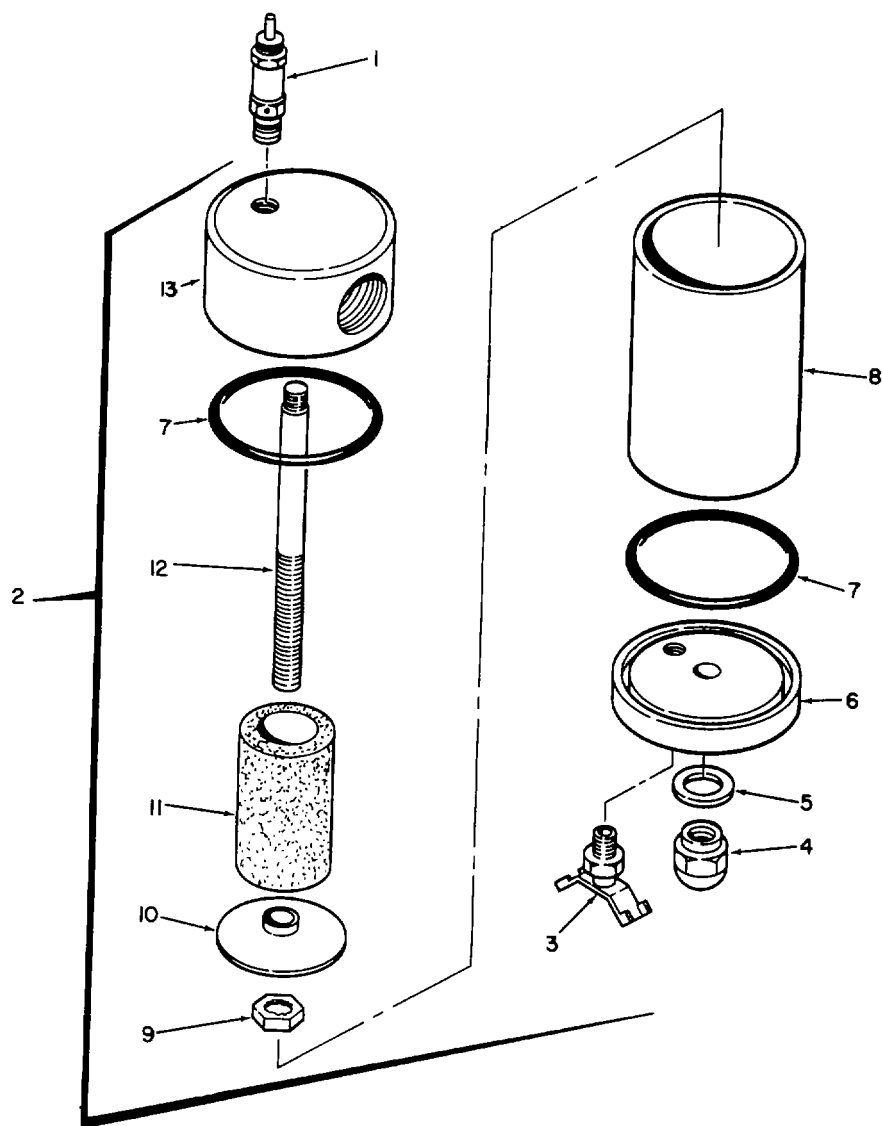


Figure 13. Separator

(1) ILLUSTRATION		(2)	(3)	(4)	(5)	(6)	(7)	(8)
(a) FIG NO.	(b) ITEM NO.	SMR CODE	NATIONAL STOCK NUMBER	PART NUMBER	FSCM	DESCRIPTION <i>USABLE ON CODE</i>	U/M	QTY INC IN UNIT
13	1	PAOZZ		125100	75336	.VALVE,RELIEF	EA	1
13	2	XDOZZ		1022-A	56215	.SEPARATOR ASSEMBLY.....	EA	1
13	3	XCOZZ		135	79470	..VALVE,DRAIN	EA	1
13	4	XBOZZ		RF3824	77122	..NUT,PAL.....	EA	1
13	5	PAOZZ		1001	56215	..GASKET,STUD	EA	1
13	6	XAOZZ		1045	56215	..BOTTOM,SEPARATOR	EA	1
13	7	PAOZZ		1000A	56215	..PACKING,PREFORMED	EA	2
13	8	XAOZZ		1044	56215	..BOWL,SEPARATOR.....	EA	1
13	9	PAOZZ	5310-00-732-0559	MS51968-8	96906	..NUT,HEXAGON	EA,	1
13	10	XAOZZ		1046	56215	..DISC,BAFFLE	EA	1
13	11	PAOZZ		100-12DL	51440	..FILTER.....	EA	1
13	12	XAOZZ		1043	56215	..STUD,SEPARATOR.....	EA	1
13	13	XAOZZ		1041	56215	..CAP,SEPARATOR.....	EA	1

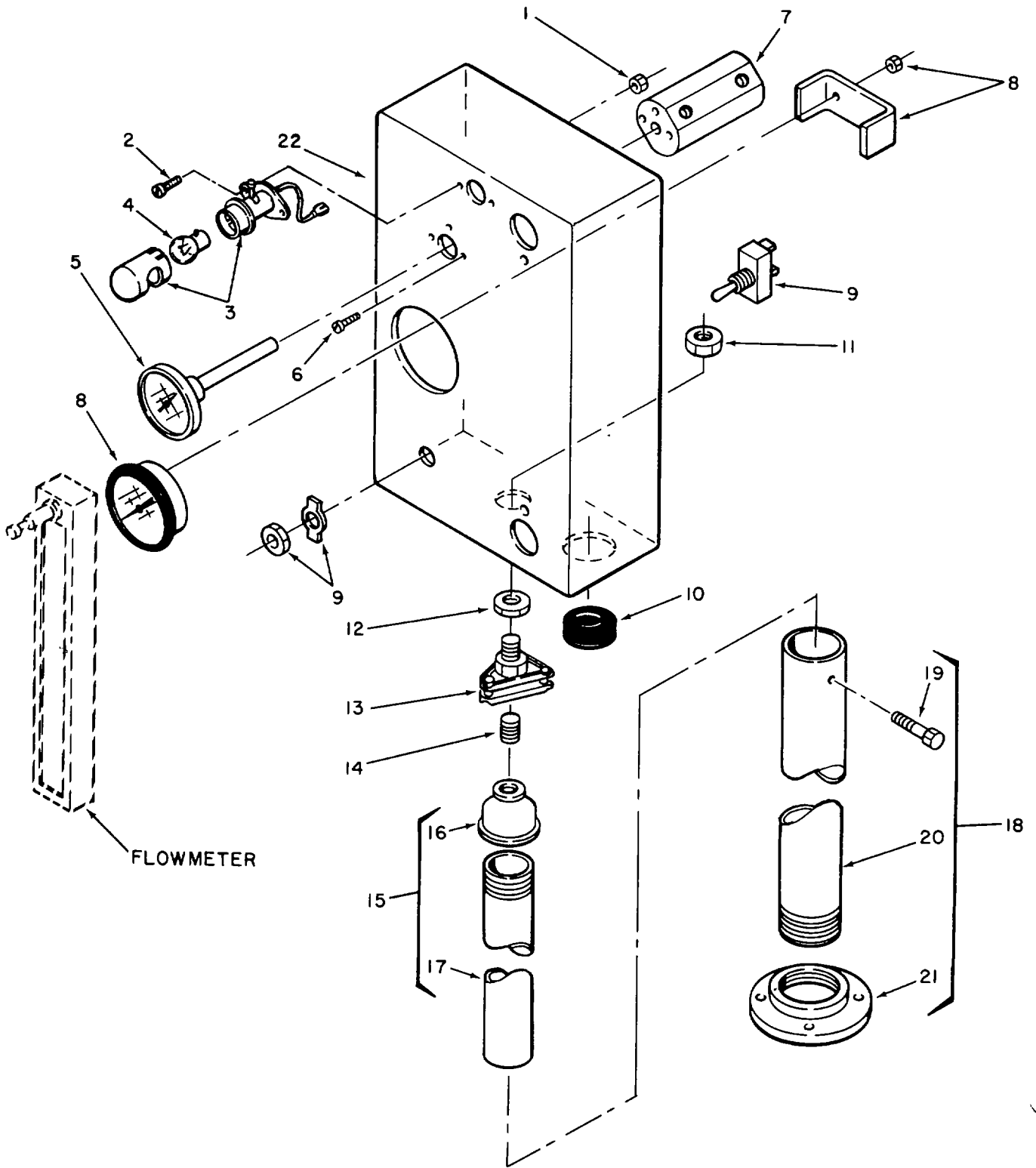


Figure 14. Control Panel Assembly

(1) ILLUSTRATION		(2)	(3)	(4)	(5)	(6)	(7)	(8)
(a) FIG NO.	(b) ITEM NO.	SMR CODE	NATIONAL STOCK NUMBER	PART NUMBER	FSCM	DESCRIPTION USABLE ON CODE	U/M	QTY INC IN UNIT
						GROUP 03 - CONTROL PANEL ASSEMBLY		
14		AFOFF		20091	56215	.CONTROL PANEL ASSEMBLY.....	EA	1
14	1	PAFZZ	5310-00-934-9747	MS35649-262	96906	.NUT,PLAIN,HEXAGON.....	EA	2
14	2	PAFZZ	5305-00-003-9249	MS51851-23	96906	.SCREW,TAPPING,THREAD	EA	2
14	3	XBOZZ	6210-00-229-5202	DL9	13445	.LIGHT,PANEL	EA	1
14	4	PAOZZ		90	08806	.LAMP,INCANDESCENT.....	EA	1
14	5	PAOZZ		100-2	72100	.GAUGE,TEMPERATURE	EA	1
14	6	PAFZZ	5305-00-978-9354	MS16997-44	96906	.SCREW,MACHINE	EA	3
14	7	XBOZZ		2010.1	56215	.WELL,TEMP	EA	1
14	8	PBOZZ		2075	56215	.GAUGE,PRESSURE	EA	1
14	9	PAFZZ	5930-00-402-1224	55023	13445	.SWITCH,TOGGLE	EA	1
14	10	XBFZZ	5325-00-171-6387	MS35489-51	96906	.GROMMET	EA	1
14	11	XBFZZ		1134-1/2	54578	.NUT,HEX,PIPE	EA	1
14	12	XBOZZ		510	59730	.BUSHING,CONDUIT	EA	1
14	13	XBFZZ		2078	56215	.JOINT,BALL	EA	1
14	14	XBFZZ		343-3/8	54578	.NIPPLE,CLOSE	EA	1
14	15	XBFZZ		2081-A	56215	.INNER MAST ASSEMBLY	EA	1
14	16	XBFZZ		1167-1	54578	.COUPLING,REDUCER	EA	1
14	17	XBFZZ		2081	56215	.MAST,INNER	EA	1
14	18	XBFZZ		2082-A	56215	.OUTER MAST ASSEMBLY	EA	1
14	19	PAFZZ	5306-00-225-9084	MS90726-29	96906	.SCREIW,CAP,HEXAGON	EA	1
14	20	XBFZZ		2082	56215	.MAST,OUTER	EA	1
14	21	XBFZZ		1190-1	54578	.FLANGE,MOUNTING	EA	1
14	22	XBFZZ		2009	56215	.PANEL,CONTROL,IMSTRUMENT	EA	1

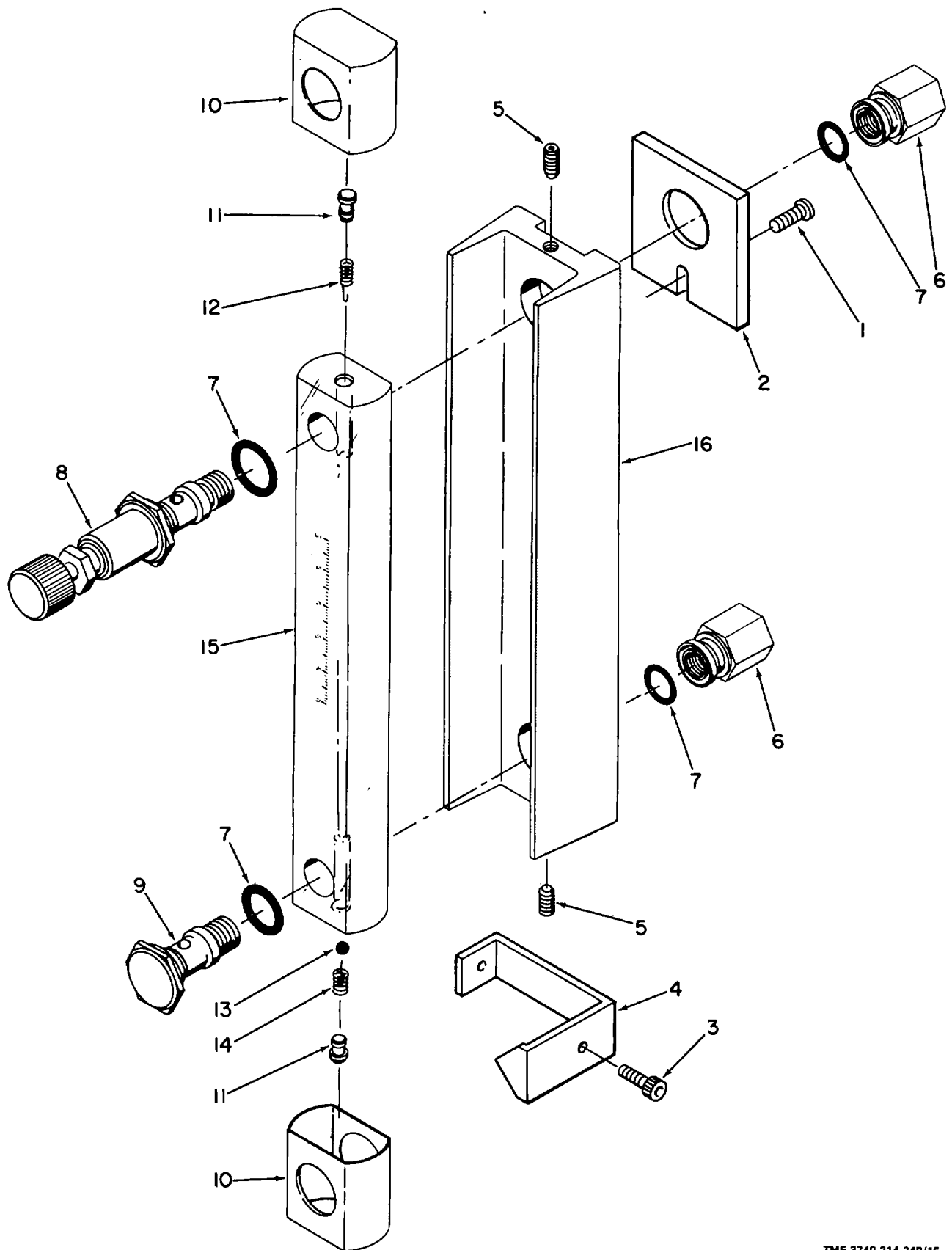


Figure 15. Flowmeter Assembly

(1) ILLUSTRATION		(2)	(3)	(4)	(5)	(6)	(7)	(8)
(a) FIG NO.	(b) ITEM NO.	SMR CODE	NATIONAL STOCK NUMBER	PART NUMBER	FSCM	DESCRIPTION USABLE ON CODE	U/M	QTY INC IN UNIT
15	1	PAFZZ	5305-00-757-8292	MS51851-44	96906	..SCREW,MACHINE	EA	2
15	2	XBFZZ		2011	56215	..SPACER,FLOWMETRE R	EA	2
15		XBFZZ		1004	56215	..FLOWMETER ASSEMBLY	EA	1
15	3	PAFZZ	5305-00-983-6651	MS16998-27	96906	..SCREW,CAP,SOCKET HEAD	EA	1
15	4	XBFZZ		2016	56215	..POINTER,FLOWKETER	EA	1
15	5	PAFZZ	5305-00-719-5339	MS51963-22	96906	..SETSCREW	EA	2
15	6	XBFZZ		364E156T60	22375	..FITTING.....	EA	2
15	7	PAFZZ	5330-00-415-2210	101W707U01	22375	..PACKING,PREFORMED	EA	4
15	8	PBFZZ		1032	56215	..VALVE,CONTROL	EA	1
15	9	XBFZZ		396C169T60	22375	..RETAINER,TUBE.....	EA	1
15	10	XBFZZ		640A119A19	22375	..TUBE CAP.....	EA	2
15	11	PCFZZ		302B063P30	22375	..PLUG,END,TEFLON	EA	2
15	12	XBFZZ		304B056T60	22375	..FLOAT STOP,OUTLET	EA	1
15	13	XBFZZ		A-133BA1	22375	..FLOAT,BALL	EA	1
15	14	XBFZZ		304B053T60	22375	..FLOATSTOP,INLET	EA	1
15	15	PBFZZ		1037	56215	..TUBE,METERING,GLASS	EA	1
15	16	PAFZZ		322A153A21	22375	..FRAM4E,METERING	EA	1

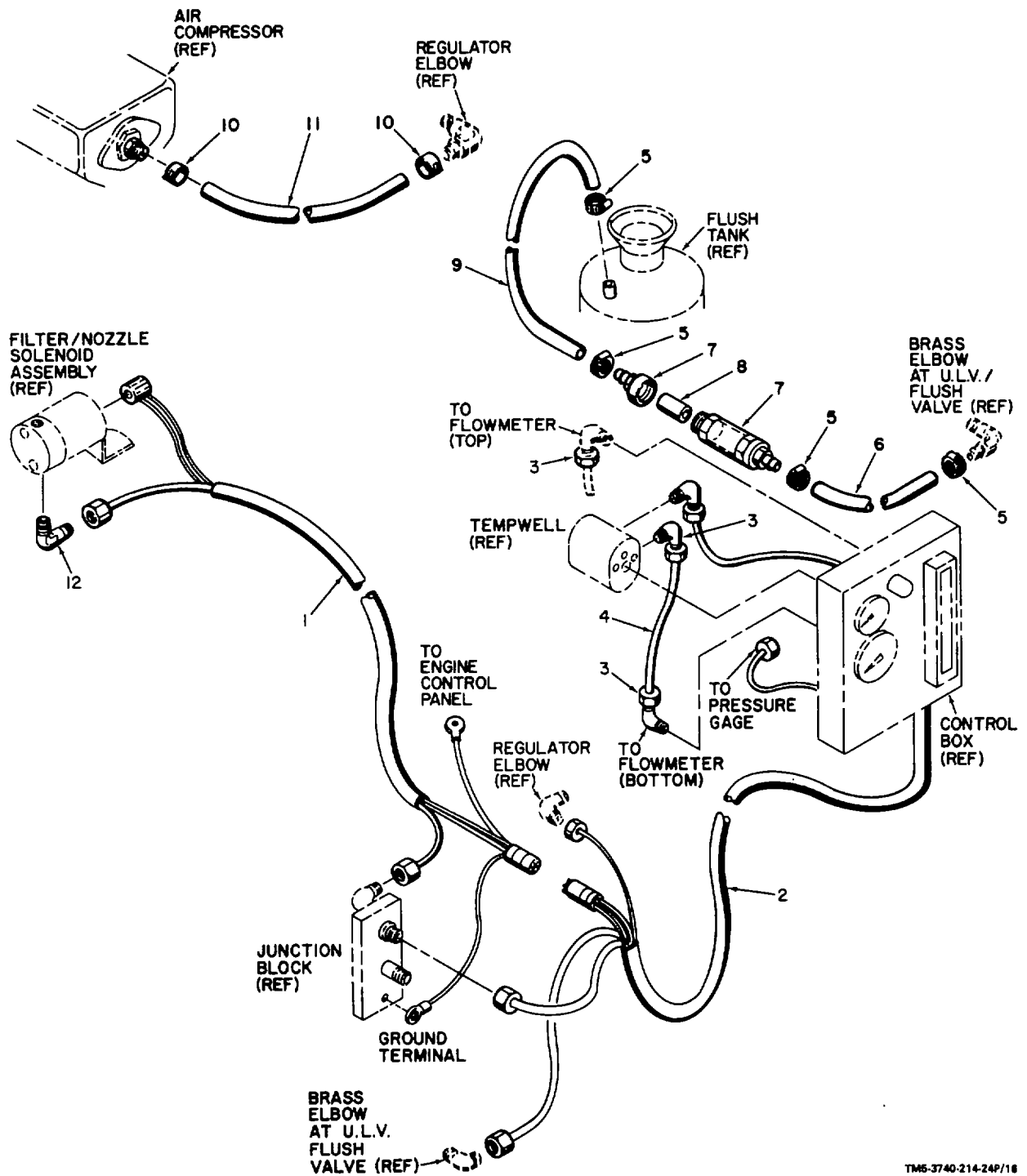
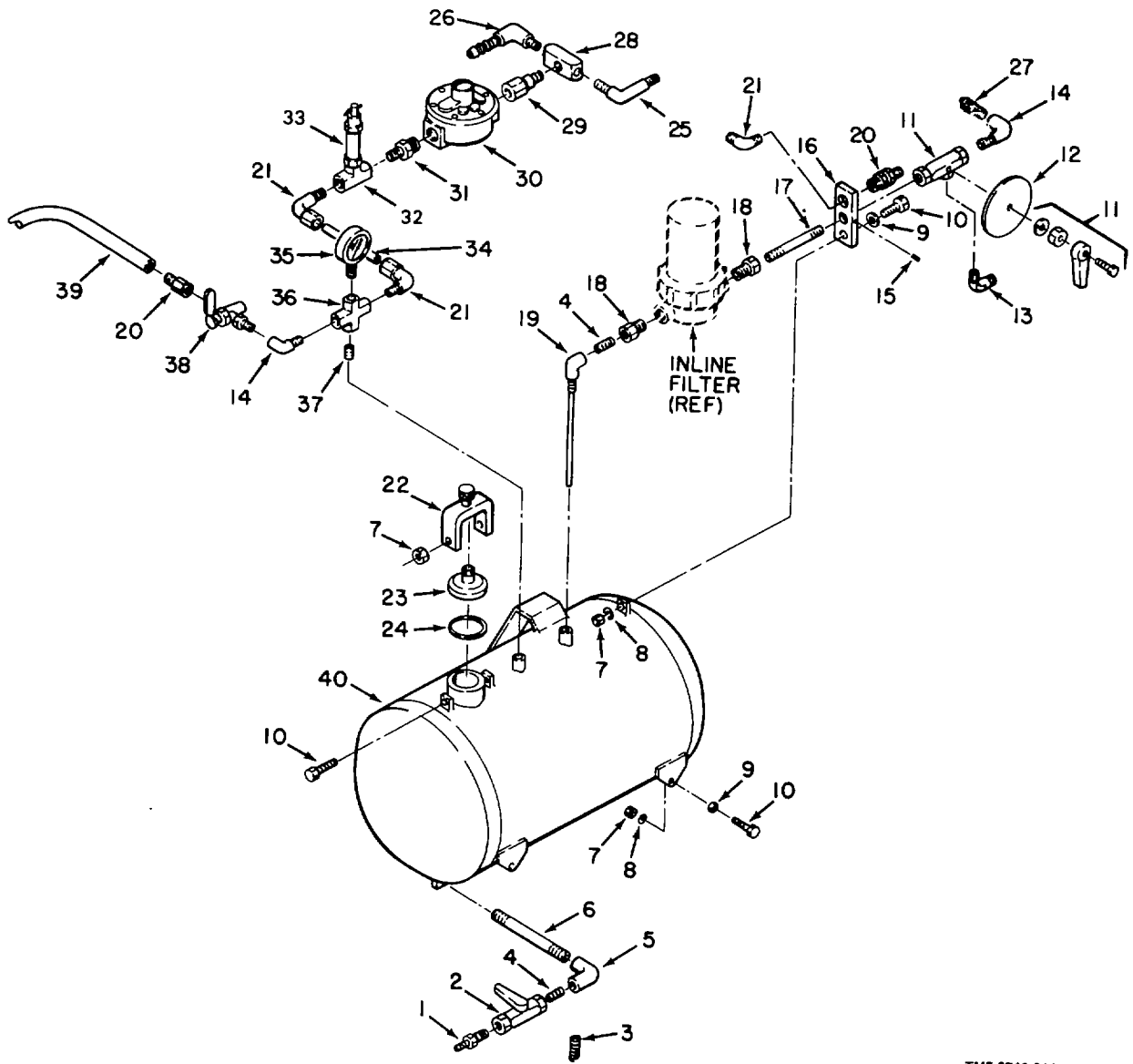


Figure 16. Hoses, Lines and Fittings

TM5-3740-214-24P/18

(1) ILLUSTRATION		(2)	(3)	(4)	(5)	(6)	(7)	(8)
(a) FIG NO.	(b) ITEM NO.	SMR CODE	NATIONAL STOCK NUMBER	PART NUMBER	FSCM	DESCRIPTION <i>USABLE ON CODE</i>	U/M	QTY INC IN UNIT
16	1	PBFZZ		2066	56215	WIRE & FLUID HARNESS.....	EA	1
16	2	PBFZZ		2072	56215	.WIRE & FLUID HARNESS	EA	1
16	3	XBZZ		40-6-4-N-0	52547	ELBOW,MALE,90 DEGREE.....	EA	4
16	4	PCFZZ		66-P-3/8-14	30327	HOSE,PLASTIC	EA	1
16	5	XBZZ		QS-100-M65	08484	CLAMP,HOSE	EA	4
16	6	PCFZZ		ZA-106-4	30327	HOSE,FLUSH LINE.....	EA	1
16	7	XBOZZ		VA-6	28566	FILTER,FLUSH LINE	EA	1
16	8	PAOZZ		9-BX	28566	.CARTRIDGEFILTER	EA	1
16	9	PCOZZ		ZA-106-26	30327	HOSE,FLUSH LINE.....	EA	1
16	10	XBOZZ		2004.1	56215	CLAMP,SPRING	EA	2
16	11	PCFZZ		ZA-104-12	30327	HOSE,COMPRESSOR	EA	1
16	12	XBZZ		40-4-4-N-0	52547	ELBOW,MALE,90 DEGREE.....	EA	1



TM5-3740-214-24P/17

Figure 17. Tank Assembly

(1) ILLUSTRATION		(2)	(3)	(4)	(5)	(6)	(7)	(8)
(a) FIG NO.	(b) ITEM NO.	SMR CODE	NATIONAL STOCK NUMBER	PART NUMBER	FSCM	DESCRIPTION USABLE ON CODE	U/M	QTY INC IN UNIT
GROUP 04 - FORMULATION TANK ASSEMBLY								
17		XBFFF		30081	56215	TANK ASSY (IMSECT)	EA	1
17	1	XBFZZ		Kr0404PS	30327	.FITTING,HOSE,BARB	EA	1
17	2	PBFZZ		2420	30327	.VALVE,TWO-WAY	EA	1
17	3	PBOZZ		2120	56215	.SPRING,RETURN	EA	1
17	4	XBFZZ		27730506	84972	.NIPPLE,CLOSE	EA	2
17	5	XBFZZ		2108A	56215	.ELBOW	EA	1
17	6	XBFZZ		2045A	2045A	.NIPPLE	EA	1
17	7	PAFZZ	5310-00-997-1888	MS35649-2252	96906	.NUT,PLAIN,HEXAGON	EA	7
17	8	PAFZZ	5310-00-582-5965	MS35338-44	96906	.WASHER,LOCK	EA	5
17	9	PAFZZ	5310-00-809-4058	MS27183-10	96906	.WASHER,FLAT.....	EA	5
17	10	PAFZZ	5305-00-068-0502	MS90725-6	96906	.SCREW,CAP,HEXAGON HAD	EA	7
17	11	PBFZZ		4Fv6XJ-SS	30780	.VALVE,THREE WAY.....	EA	1
17	12	XBFZZ		2132.1	56215	.PANEL,VALVE	EA	1
17	13	XBFZZ		40-6-4-N-0	52547	.ELBON,90,DEGREE,MALB	EA	1
17	14	XBFZZ		116-8-04	30327	.ELBOW,MALE	EA	2
17	15	PBFZZ	5305-00-723-9399	YS51963-46	96906	.SETSCREW,CUP POINT	EA	2
17	16	XBFZZ		2013.1	56215	.BLOCX,JUNCTION	EA	1
17	17	XBFZZ		27730548	84972	.NIPPLE,2 INCH	EA	1
17	18	XBFZZ		27700228	84972	.BUSHING,REDUCER	EA	2
17	19	XBFZZ		2034.1	56215	.PICXUP TUBE ASSEMBLY	EA	1
17	20	XBFZZ		25-6-4-N-0	52547	.CONNECTOR,FEMALE	EA	2
17	21	XBFZZ		40-4-4-N-0	52547	.ELBOW,MALE,90 DEGRE	EA	3
17	22	XBFZZ		2005.1A	56215	.CAP BRACKET ASSEMBLY	EA	1
17	23	XBFZZ		2012A	56215	.TANK CAP ASSEMBLY	EA	1
17	24	PCOZZ	5330-01-005-4058	M83248/1-330	81349	..PACXING,PREFORMRD	EA	1
17	25	XBFZZ		270P-1/8	30327	.ELBOW,FEMALE,90 DEGRE	EA	1
17	26	XBFZZ		KFO4-04PS90	30327	.ELBOW,MALE,90 DEGREE	EA	2
17	27	XBFZZ		KFO404PS	30327	.BARB,HOSE,1/4 INCH	EA	2
17	28	XBFZZ	4730-00-595-0251	3600X2	79470	.TEE,FEM.....	EA	1
17	29	XBFZZ		119-B-06X04	30327	.BUSHING,REDUCING	EA	1
17	30	PBFZZ		2088	56215	.REGULATOR	EA	1
17	31	PBFZZ		2049	56215	.VALVE,CHCK	EA	1
17	32	XBFZZ		101B-1/4	30327	.TEE,MALE,BRASS	EA	1
17	33	XBFZZ	4820-00-893-9841	112C	75336	.VALVE,SAFETY	EA	1
17	34	PBFZZ		44P	30327	.HOSE,PLASTIC	EA	1
17	35	PBOZZ		2055	56215	.GAUGE,PRESSURE	EA	1
17	36	XBFZZ		102B-1/4	30327	.CROSS,BRASS.S	EA	1
17	37	XBFZZ		112B-1/4	30327	.NIPPLE,CLOSE,BRASS	EA	1
17	3q	XBOZZ		171C-1	70411	.VALVE,DRAIN	EA	1
17	39	XBOZZ		66-P-3/8-19.5	30327	.HOSE,DRAIN,PLASTIC.....	EA	1
17	40					TANK	EA	1

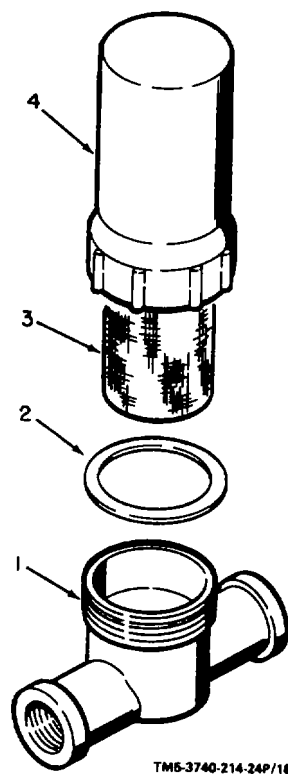
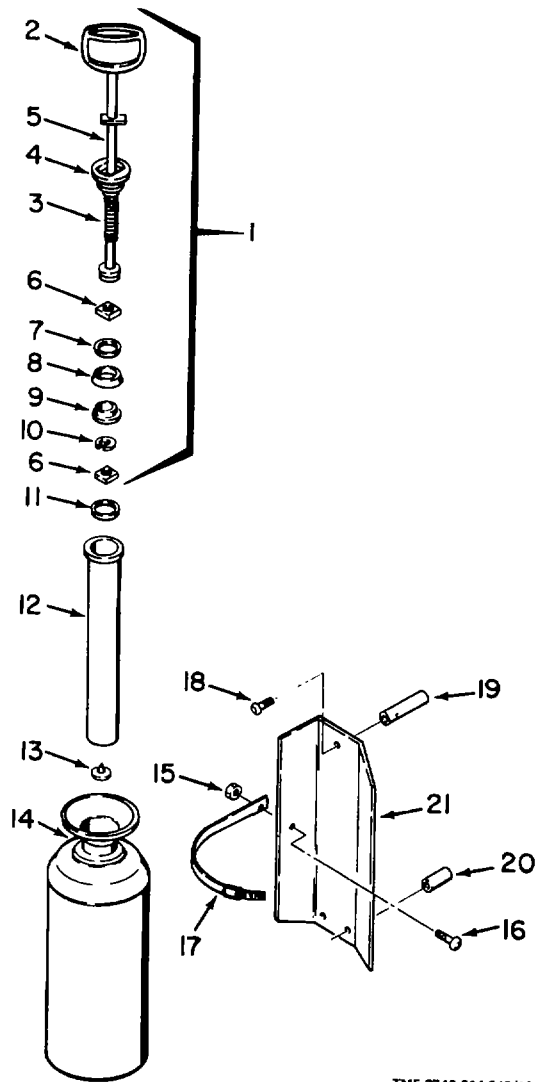


Figure 18. Inline Strainer

☆ U.S. GOVERNMENT PRINTING OFFICE 1988--554-030/80044 Region #6

PIN: 049894-001

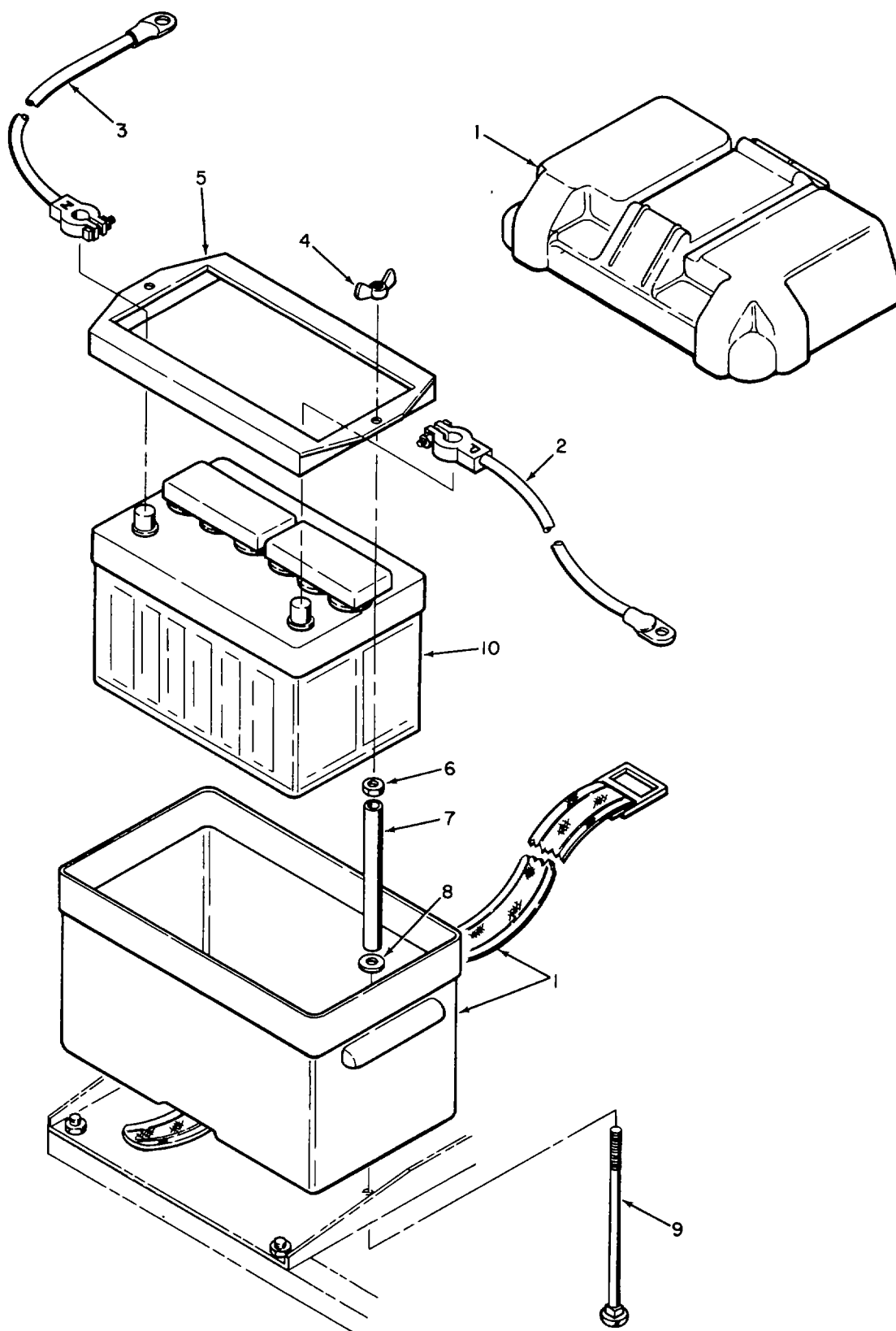
(1) ILLUSTRATION		(2)	(3)	(4)	(5)	(6)	(7)	(8)
(a) FIG NO.	(b) ITEM NO.	SMR CODE	NATIONAL STOCK NUMBER	PART NUMBER	FSCM	DESCRIPTION <i>USABLE ON CODE</i>	U/M	QTY INC IN UNIT
18		XBFZZ		1/2NPT	34234	.INLINE STRAINER.....	EA	1
18	1	XAFZZ		1/2-4	34324	.BOWL.....	EA	1
18	2	PAOZZ		2035	56215	.GASKET,STRAINER.....	EA	1
18	3	PBOZZ		2036.1	56215	.SCREEN,STRAINER	EA	1
18	4	XAFZZ		1/2-1	34234	.COVER,STRAINER	EA	1



TM5-3740-214-24P/19

Figure 19. Flush Tank Assembly

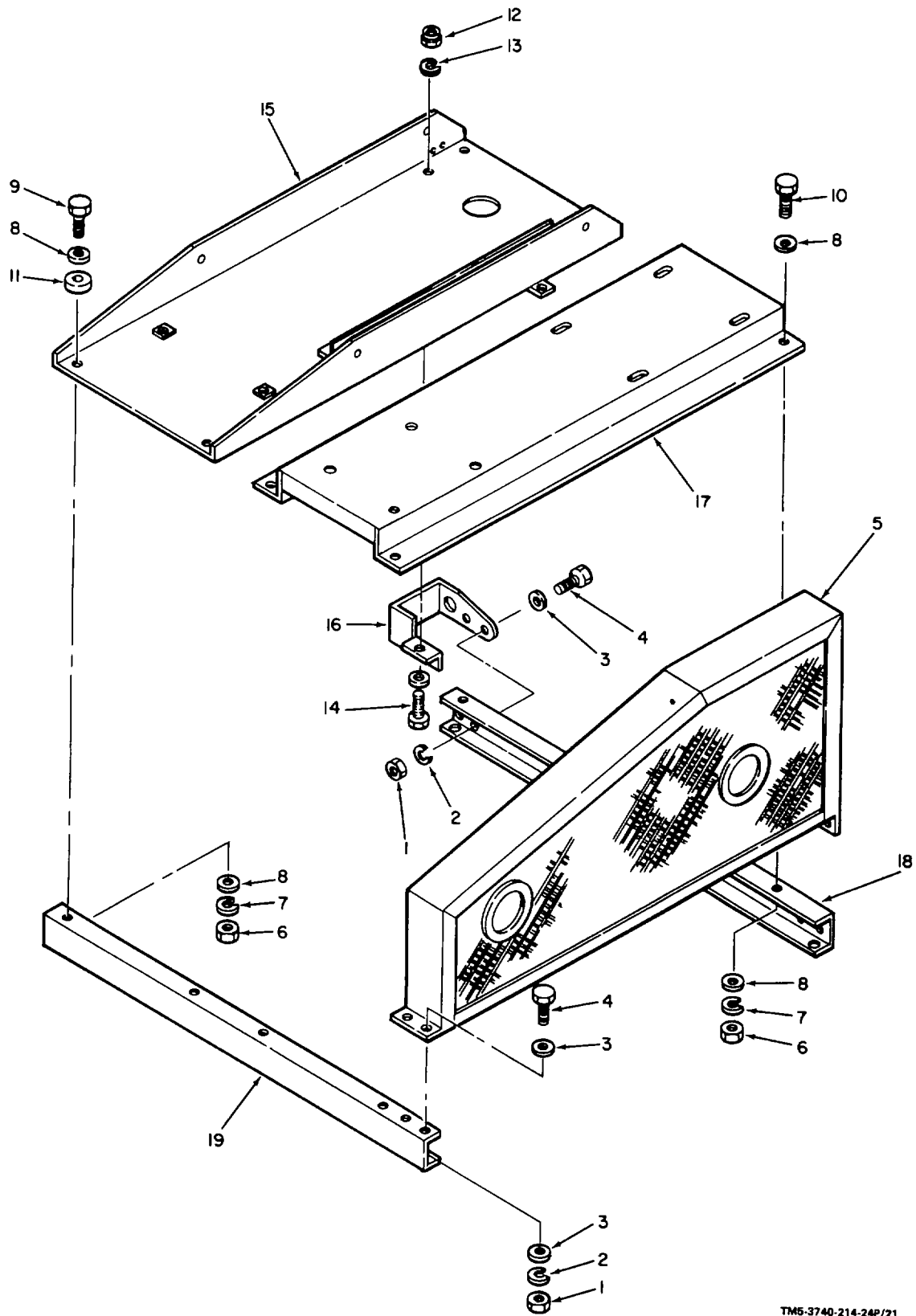
(1) ILLUSTRATION		(2)	(3)	(4)	(5)	(6)	(7)	(8)
(a) FIG NO.	(b) ITEM NO.	SMR CODE	NATIONAL STOCK NUMBER	PART NUMBER	FSCM	DESCRIPTION USABLE ON CODE	U/M	QTY INC IN UNIT
19		XBOZZ		2125.1	56215	FLUSH TANK ASSEMBLY.....	EA	1
19	1	XBOZZ		3-8313	15317	.PLUNGER ROD ASSEMBLY	EA	1
19	2	XAOZZ		2-5580	15317	..PLUNGER,D-HANDLE	EA	1
19	3	XBOZZ		1-5587	15317	..COIL SPRING,PLUNGER	EA	1
19	4	XBOZZ		1-4762	15317	..PLUNGER,CAM-LOCK	EA	1
19	5	XAOZZ		2-8120	15317	..PLUNGER ROD	EA	1
19	6	XBOZZ		1-2249	15317	..NUT,SQUARE.....	EA	2
19	7	XAOZZ		2-2252	15317	..WASHER,BACKING	EA	1
19	8	KFOZZ		1-2091-1	15317	..LEATHER,PUMP	EA	1
19	9	KFOZZ		2-3017-1	15317	..DISC SPREADER.....	EA	1
19	10	XBOZZ		1-3087	15317	..WASHER,LOCK	EA	1
19	11	KFOZZ		1-3657	15317	.GASKET,PUMP	EA	1
19	12	XAOZZ		3-7013	15317	.PUMP BARREL (7 INCH).....	EA	1
19	13	XBOZZ		1-4324	15317	.VALVE,PUMP.....	EA	1
19	14	XBOZZ		3-1753	15317	.TANK,GALVANIZED	EA	1
19	15	PAOZZ	5310-00-934-9758	MS35649-202	96906	NUT,PLAIN,HEXAGON.....	EA	2
19	16	PAOZZ	5305-00-984-6210	MS35206-263	96906	SCREW,MACHINE	EA	2
19	17	XBOZZ		2126	56215	CLAMP,BAND.....	EA	1
19	18	PAOZZ	5305-00-988-1723	MS35206-279	96906	SCREW,MACHINE	EA	2
19	19	XBOZZ		2127	56215	SPACER STUD ASSEMBLY	EA	1
19	20	XBOZZ		2128	56215	SPACER,LOWER	EA	2
19	21	XBOZZ		2117	56215	FLUSH TANK BRACKET	EA	1
19		PAOZZ		3-1847	15317	KIT,REPAIR.....	EA	1



TM5-3740-214-24P/20

Figure 20. Battery Box Assembly

(1) ILLUSTRATION		(2)	(3)	(4)	(5)	(6)	(7)	(8)
(a) FIG NO.	(b) ITEM NO.	SMR CODE	NATIONAL STOCK NUMBER	PART NUMBER	FSCM	DESCRIPTION <i>USABLE ON CODE</i>	U/M	QTY INC IN UNIT
						GROUP 05 - BATTERY BOX ASSEMBLY		
20		XBFZZ		33333	56215	BATTERY BOX ASSEMBLY.....	EA	1
20	1	XAFZZ		3058A	56215	.BOX,BATTERY.....	EA	1
20	2	XBOZZ		2070	56215	CABLE,BATTERY (P).....	EA	1
20	3	XBOZZ		2071	56215	.CABLE,BATTERY (N).....	EA	1
20	4	PAOZZ	5310-00-515-9254	MS35425-24	96906	NUT,PLAIN,WING.....	EA	2
20	5	XBFZZ		2008.1	56215	HOLDDOWN,BATTERY.....	EA	1
20	6	PAOZZ	5310-00-829-9981	MS35649-2312	96906	.NUT,PLAIN,HEXAGON.....	EA	2
20	7	XBOZZ		3050	56215	.TUBE,SPACER.....	EA	2
20	8	PAOZZ	5310-00-081-4219	MS27183-12	96906	.WASHER,FLAT.....	EA	2
20	9	PAOZZ	5306-00-012-6987	MS35751-63	96906	.BOLT,CARRIAGE.....	EA	2
20	10	PAOZZ	6140-00-057-2553	MS35000-1	96906	.BATTERY.....	EA	1



TM5-3740-214-24P/21

Figure 21. Base Assembly

(1) ILLUSTRATION		(2)	(3)	(4)	(5)	(6)	(7)	(8)
(a) FIG NO.	(b) ITEM NO.	SMR CODE	NATIONAL STOCK NUMBER	PART NUMBER	FSCM	DESCRIPTION USABLE ON CODE	U/M	QTY INC IN UNIT
GROUP 06 - BASE ASSEMBLY								
21	1	PAFZZ	5310-00-768-0319	MS51968-2	96906	.NUT,HEXAGON.....	EA	6
21	2	PAFZZ	5310-00-582-5965	MS35338-44	96906	.WASHER,LOCK	EA	6
21	3	PAFZZ	5310-00-809-4058	MS27183-10	96906	.WASHER,PLAT	EA	10
21	4	PAFZZ	5305-00-068-0506	MS90726-6	96906	SCREW,CAP,HEXAGON HEAD	EA	6
21	5	XBFZZ		3002.1	56215	.GUARD,BELT.....	EA	1
21	6	PAFZZ	5310-00-880-7746	MS51968-5	96906	.NUT,PLAIN,HEXAGON.....	EA	B
21	7	PAFZZ	5310-00-407-9566	MS35338-45	96906	.WASHER,LOCK.....	EA	8
21	H	PAFZZ	5310-00-081-4219	MS27183-12	96906	.WASHER,FLAT.....	EA	16
21	9	PAFZZ	5305-00-267-8973	MS90726-4	96906	.SCREW,CAP,HEXAGON HEAD	EA	4
21	10	PAFZZ	5305-00-267-8974	MS90726-8	96906	.SCREW,CAP,HEXAGON HEAD	EA	4
21	11	XBFZZ		2065	56215	.WASHER,ALUMINUM.....	EA	4
21	12	PAFZZ	5310-00-934-9758	MS35649-202	96906	.NUT,PLAIN,HEXAGON.....	EA	1
21	13	PAFZZ	5310-00-045-3296	MS35338-43	96906	.WASHER,LOCK.....	EA	1
21	14	PAFZZ		MS51851-68	96906	.SCREW,CAP,HEXAGON HEAD	EA	1
21	15	XBFZZ		3003.1A	56215	.CHANNEL,TANK	EA	1
21	16	XBFZZ		2051	56215	.BRACKET,GUARD.....	EA	1
21	17	XBFZZ		3001	56215	.BASE,MOUNTING	EA	1
21	18	XBFZZ		3005.1	56215	.CROSS RAIL.....	EA	1
21	19	XBFZZ		3005.2	56215	.CROSS RAIL,ENGINE.....	EA	1

SECTION IV

TM 5-3740-214-24P

NATIONAL STOCK NUMBER AND PART NUMBER INDEX

STOCK NUMBER	FIG.	ITEM	STOCK NUMBER	FIG.	ITEM
5305-00-003-9749	14	1	5310-00-582-5965	17	8
5306-00-012-6987	20	9	5310-00-582-5965	21	2
4820-00-026-8473	11	63	4730-00-595-0251	17	28
5310-00-045-3296	21	13	3110-00-606-1840	11	57
6140-00-057-2553	20	13	3110-00-606-1841	11	56
5305-00-068-0500	1	44	5940-00-644-8713	3	31
5305-00-068-0500	5	1	5305-00-719-5339	15	5
5305-00-068-0501	1	7	5305-00-723-9399	17	19
5305-00-068-0501	3	3	5305-00-732-0559	13	9
5305-00-068-0501	3	7	5305-00-757-8287	7	1
5305-00-068-0502	8	1	5305-00-757-8292	19	1
5305-00-068-0502	17	10	5310-00-761-6882	1	36
5305-00-068-0506	21	4	5310-00-768-0319	21	1
5305-00-071-2242	1	50	5310-00-809-4058	2	3
5310-00-081-4219	11	3	5310-00-809-4058	3	13
5310-00-081-4219	20	8	5310-00-809-4058	5	3
5310-00-081-4219	21	8	5310-00-809-4058	17	9
5310-00-087-7493	1	3	5310-00-809-4058	21	3
5940-00-143-4780	5	6	5310-00-829-9981	11	31
5305-00-146-2663	11	24	5310-00-829-9981	20	6
5330-00-166-0993	12	12	5305-00-855-0558	3	19
5310-00-167-0721	8	2	5310-00-880-7746	01	1
5325-00-171-6387	14	10	5310-00-880-7746	11	1
5305-00-225-3839	2	2	5310-00-880-7746	12	5
5306-00-225-8499	1	17	5310-00-880-7746	21	6
5305-00-225-9081	1	4	4820-00-893-9841	17	33
5306-00-225-9084	14	19	5310-00-934-9747	14	1
5306-00-225-9089	11	51	5310-00-934-9758	19	15
6210-00-229-5202	14	3	5310-00-934-9758	21	12
5305-00-267-8973	21	9	5310-00-955-4679	1	18
5305-00-267-8974	21	10	5305-00-978-9354	14	6
5305-00-269-2803	4	1	5305-00-983-6651	15	3
5930-00-402-1224	14	9	5305-00-984-6210	19	16
5310-00-407-9566	1	2	5305-00-988-1723	19	18
5310-00-407-9566	1	51	5310-00-997-1888	2	1
5310-00-407-9566	11	2	5310-00-997-1888	3	6
5310-00-407-9566	11	32	5310-00-997-1888	5	4
5310-00-407-9566	21	7	5310-00-997-1888	17	7
5330-00-415-2210	15	7	5330-01-005-4058	17	24
5310-00-515-0254	20	4	5307-01-013-7888	1	26
5310-00-550-1130	1	8	5307-01-013-7888	11	33
5310-00-550-1130	5	5	4240-01-090-6698	11	49
5310-00-550-1130	7	2	5330-01-091-3517	11	28
5310-00-576-5752	3	20	4330-01-091-6965	11	15
5310-00-582-5965	1	37	5330-01-091-8588	11	22
5310-00-582-5965	1	45	5330-01-091-8589	11	39
5310-00-582-5965	3	4	4330-01-092-0297	11	16
5310-00-582-5965	5	2	3110-01-092-4765	11	54

PART NUMBER	FSCM	FIG. NO.	ITEM NO.	PART NUMBER	FSCM	FIG. NO.	ITEM NO.
A-1338A1	22375	15	13	MS27183-10	96906	5	3
A-230115--S	52845	9	7	MS27183-10	96906	17	9
A-231301	52845	9	1	MS27183-10	96906	21	3
A-231886	52845	7	4	MS27183-12	96906	11	3
A-234598	52845	1	14	MS27183-12	96906	20	8
A-234678	52845	1	38	MS27183-12	96906	21	8
A-234950	52845	9	3	MS27183-13	96906	1	3
A-235157	52845	2	14	MS35000-1	96906	20	10
A-236938	52845	5	7	MS35206-263	96906	19	16
AG00-30	71400	3	12	MS35206-279	96906	19	18
B2L X 68	55130	12	7	MS35333-39	96906	3	20
C-231738	52845	8	3	MS35333-40	96906	1	8
DL9	13445	14	3	MS35333-40	96906	5	5
KF04-04PS90	30327	17	26	MS35333-40	96906	7	2
KF0404PS	30327	17	1	MS35338-41	96906	8	2
KF0404PS	30327	17	27	MS35338-43	96906	21	13
LM67010	60038	11	57	MS35338-44	96906	1	37
LM67048	60038	11	56	MS35338-44	96906	1	45
L44610	60038	11	60	MS35338-44	96906	3	4
L44649	60038	11	59	MS35338-44	96906	5	2
MS16997-44	96906	14	6	MS35338-44	96906	17	8
MS16998-27	96906	15	3	MS35338-44	96906	21	2
MS24629-45	96906	3	19	MS35338-45	96906	1	2
MS25036-8	96906	3	31	MS35338-45	96906	1	51
MS25036-9	96906	3	32	MS35338-45	96906	11	2
MS27183-10	96906	2	3	MS35338-45	96906	11	32
MS27183-10	96906	3	13	MS35338-45	96906	21	7

SECTION IV. NATIONAL STOCK NUMBER AND PART NUMBER INDEX

PART NUMBER	FSCM	FIG. NO.	ITEM NO.	PART NUMBER	FSCM	FIG. NO.	ITEM NO.
MS35338-46	96906	4	2	1000A	56215	13	7
MS35340-45	96906	1	18	1001	56215	13	5
MS35425-24	96906	20	4	1004	56215	15	
MS35489-51	96906	14	10	1018-1/4	30327	17	32
MS35649-202	96906	19	15	101W707001	22375	15	7
MS35649-202	96906	21	12	1010	56215	12	1
MS35649-2252	96906	2	1	101.2	56215	12	9
MS35649-2252	96906	3	6	1013	56215	12	4
MS35649-2252	96906	5	4	1028-1/4	30327	17	36
MS35649-2252	96906	17	1	1022-A	56215	13	2
MS35649-2312	96906	11	31	1032	56215	15	8
MS35649-2312	96906	20	6	1037	56215	15	15
MS35649-262	96906	14	1	1041	56215	13	13
MS35751-63	96906	20	9	1043	56215	13	12
MS51851-23	96906	14	2	1044	56215	13	8
MS51851-43	96906	7	1	1045	56215	13	6
MS51851-44	96906	15	1	1046	56215	13	10
MS51851-68	96906	21	14	1103-1	54578	6	3
MS51851-88	96906	11	24	1128-1/4	30327	17	37
MS51864-103-18	96906	1	26	1120	75336	17	33
MS51864-103-18	96906	11	33	1124-1/2	54578	1	48
MS51963-22	96906	15	5	1134-1	54578	6	4
MS51963-46	96906	17	15	1134-1/2	54578	14	11
MS51967-2	96906	1	36	1153	01605	11	49
MS51968-2	96906	21	1	116-8-04	30327	17	14
MS51968-5	96906	01	1	116-8-08	30327	12	14
MS51968-5	96906	11	1	1161-3/4	54578	12	16
MS51968-5	96906	12	5	1167-1	54578	14	16
MS51968-5	96906	21	6	1174	01605	11	20
MS51968-8	96906	13	9	119-8-06X04	30327	17	29
MS90725-3	96906	1	44	1190-1	54578	14	21
MS90725-3	96906	5	1	1210	01605	11	37
MS90725-34	96906	1	17	1217	01605	11	45
MS90725-36	96906	1	4	1227	01605	11	43
MS90725-5	96906	1	7	1244	01605	11	19
MS90725-5	96906	3	3	125100	75336	13	1
MS90725-5	96906	3	7	1265	01605	11	65
MS90725-6	96906	8	1	1291	01605	11	48
MS90725-6	96906	17	10	1316	01605	11	30
MS90725-8	96906	2	2	1319	01605	11	38
MS90725-9	96906	1	50	135	79740	13	3
MS90726-29	96906	14	19	1357	01605	11	50
MS90726-34	96906	11	51	1358	01605	11	47
MS90726-4	96906	21	9	1381	01605	11	53
MS90726-6	96906	21	4	1382	01605	11	52
MS90726-60	96906	4	1	1394	01605	11	34
MS90726-8	96906	21	10	1396	01605	11	61
M83248/1-C17	81349	12	12	1397	01605	11	54
M83248/1-330	81349	17	24	1398	01605	11	66
QS-100-M6S	08484	16	5	1399	01605	11	44
RF3824	77122	13	4	1400	01605	11	58
UM5008	56215	5	13	1402	01605	11	62
VA-6	28565	16	7	1403	01605	11	55
X-119-14	28565	1	12	1404	01605	11	35
X-230-11	52845	1	12	1459	01605	11	9
X-25-15	52845	1	13	1460	01650	11	40
X-25-58	52845	2	8	1521	01605	11	64
X-276-7	52845	7	3	1524	01605	11	42
X-389-2N	52845	3	25	1528	01605	11	18
X-391-1	52845	5	11	1537	01605	11	41
X-583-1	52845	1	19	1548	01605	11	36
X-583-2	52845	1	34	1549	01605	11	39
X-67-5	52845	2	4	171C-L	70411	17	38
ZA-101-12	30327	16	11	1966	01605	11	46
ZA-104-6	30327	5	12	2-2252	15317	19	7
ZA-106-26	30327	16	9	2-3017-1	15317	19	9
ZA-106-4	30327	16	6	2-5580	15317	19	2
0066	84523	1	42	2-8120	15317	19	5
1-2081-1	15317	19	8	200375	52845	8	14
1-2240	15317	19	6	200376	52845	8	11
1-3807	15317	19	10	200380	52845	8	6
1-3657	15317	19	11	200333	52845	8	8
1-4324	15317	19	13	200411	56215	16	10
1-4762	15317	19	4	200408	52845	8	12
1-5587	15317	19	3	200418	52845	8	10
1/2-1	34234	18	4	200420	52845	8	9
1/2-4	34324	18	1	200438	52845	8	5
1/2NPT	54324	18		200439	52845	8	13
100-12DL	51440	13	11	200443	52845	8	15
100-2	72100	14	5	2005 1A	56215	17	22
				22			

SECTION IV. NATIONAL STOCK NUMBER AND PART NUMBER INDEX

PART NUMBER	FSCM	FIG. NO.	ITEM NO.	PART NUMBER	FSCM	FIG. NO.	ITEM NO.
2008.1	56215	20	5	230087	52845	9	16
2009	56215	14	22	230092	52845	1	24
20091	56215	14		230112	52845	1	22
2010.1	56215	14	7	230125-S	52845	2	15
2011	56215	15	2	230148	52845	1	16
2012A	56215	17	23	230149	52845	2	12
2013.1	56215	17	16	230170	52845	1	31
2016	56215	15	4	230249	52845	3	18
2023	01605	11	27	230293	52845	9	10
2030	56215	12	8	230410	52845	6	1
2034.1	56215	17	19	230442	52845	3	8
2035	01605	11	26	230476	52845	2	11
2035	56215	18	2	230478	52845	2	7
2036	01605	11	25	230525	52845	9	2
2036.1	56215	18	3	230540-S	52845	2	13
2045A	56215	17	6	230690	52845	9	11
2049	56215	17	31	230710	52845	9	22
2051	56215	21	16	230772	52845	3	15
2055	56215	17	35	231142	52845	1	10
2058	01605	11	28	231355	52845	2	5
2065	56215	21	11	231419	52845	1	39
2066	56215	16	1	231555	52845	8	
2070	56215	20	2	231625	52845	1	21
2071	56215	20	3	231730	52845	9	12
2072	56215	16	2	231737	52845	1	20
2075	56215	14	8	231761	52845	9	6
2078	56215	14	13	231804	52845	1	11
2081	56215	14	17	231847	52845	7	6
2081-A	56215	14	15	231855	52845	7	5
2082	56215	14	20	231857	52845	7	7
2082-A	56215	14	18	231879	52845	3	16
2088	56215	17	30	232535	52845	3	21
2098	01605	11	8	232575	52845	9	5
2099	01605	11	11	232614	52845	2	9
210223	52845	8	4	232617	52845	2	10
2104	01605	11	14	232635	52845	8	7
2106	56215	12	6	232659	52845	9	15
2108A	56215	16	5	232777	52845	9	23
211273	79470	11	63	234392	52845	1	9
2117	56215	19	21	234402	52845	1	25
2120	56215	17	3	234767	52845	5	14
2125.1	56215	19		234347	52845	1	27
2126	56215	19	17	234994	52845	3	17
2127	56215	19	19	237335	52845	3	5
2128	01605	11	15	237357	52845	4	7
2128	56215	19	20	237363	52845	4	10
2129	01605	11	16	237364	52845	4	13
2130	01605	11	17	237367	52845	4	
2131	01605	11	13	237368	52845	4	14
2132.1	56215	17	12	237644	52845	4	4
2136	01605	11	6	237645	52845	4	8
2138	01605	11	22	237647	52845	4	5
2147	01605	11	21	237649	52845	4	11
2149	01605	11	23	237650	52845	4	12
2160	56215	5	8	237761	52845	4	
21601	56215	5	6	237762	52845	4	
2161	56215	1	6	237878	52845	3	35
2168	01605	11	12	238011	52845	3	9
2168	56215	1	49	238013	52845	3	10
220174	52845	3	22	238057	52845	3	1
220297	52845	3	26	240282	52845	1	46
220476	52845	3	24	2420	30327	17	2
220537	52845	7	8	25-6-4-N-0	52547	17	20
2206	01605	11		270P-1/8	30327	17	25
220764	52845	5	10	275267	52845	9	13
220853	52845	5	9	2770228	84972	17	18
230004	52845	9	4	27730506	84972	17	4
230007-S	52845	1	30	27730548	84972	17	17
230008	52845	9	18	3-1753	15317	19	14
230010	52845	9	20	3-1847	15317	19	
230011	52845	9	19	3-7013	15317	19	12
230013	52845	9	21	3-8313	15317	19	1
230021	52845	1	52	3X559	71176	1	32
230043	52845	1	43	3000A	56215	11	4
230046	52845	1	40	3001	56215	21	17
230048	52845	1	41	3002.1	56215	21	5
230053	52845	9	9	3003.1A	56215	21	15
230054	52845	1	23	3004A	56215	11	5
230078	52845	2	6	3005.1	56215	21	18
230087	52845	9	14	3005.2	56215	21	19
				23			

SECTION IV. NATIONAL STOCK NUMBER AND PART NUMBER INDEX

PART NUMBER	FSCM	FIG. NO.	ITEM NO.	PART NUMBER	FSCM	FIG. NO.	ITEM NO.
3006	56215	1	5	40-6-4-N-0	52547	17	13
30081	56215	17		41-005-01	52845	1	55
3014	56215	12	17	41-015-02	52845	1	28
3028063P30	22375	15	11	41-041-01	52845	1	47
3022	56215	12	3	41-041-05	52845	1	53
30221	56215	12		41-041-05	52845	1	29
3023	56215	12	2	41-096-01	52845	4	6
3024	56215	1	33	41-098-01	52845	4	13
3036	56215	11		41-323-02	52845	3	11
304B053T60	22375	15	14	41-755-01	52845	9	17
304B056T60	22375	15	12	41-755-04	52845	4	9
3050	56215	20	7	42-025-17	30327	1	15
3054	56215	12	11	44P-4	52845	17	34
3055	56215	12	10	47-089-01	52845	9	8
3057	56215	12	13	47-150-01	52845	3	14
3058A	56215	20	1	47-150-01	52845	3	23
320381	00779	3	34	5L-710	71176	10	1
322A153A21	22375	15	16	51-132-02	52845	3	2
33333	56215	20		510	59730	14	12
339-1/2	54578	12	15	55023	13445	14	9
343-1	54578	6	2	59079R-12	77060	3	29
343-3/8	54578	14	14	59079R-18	77060	3	30
3600X2	79470	17	28	59079R-3.25	77060	3	27
364F156T60	22375	15	6	59079R-4.75	77060	3	28
383-3/4	54578	11	10	60416-1	00779	3	33
3960169T60	22375	15	9	640A119A19	22375	15	10
4FV6XJ-SS	30780	17	11	66-P-3/8-14	30327	16	4
40-4-4-N-0	52547	16	12	66-P-3/8-19.5	30327	17	39
40-4-4-N-0	52547	17	21	9-BX	28566	16	8
40-6-4-N-0	52547	16	3	90	08806	14	4

By Order of the Secretary of the Army:

Official:

E. C. MEYER
General, United States Army
Chief of Staff

ROBERT M. JOYCE
Brigadier General, United States Army
The Adjutant General

DISTRIBUTION:

To be distributed in accordance with DA Form 12-25A, Insect and Pest Control.

RECOMMENDED CHANGES TO EQUIPMENT TECHNICAL PUBLICATIONS



SOMETHING WRONG WITH PUBLICATION

FROM: (PRINT YOUR UNIT'S COMPLETE ADDRESS)

DATE SENT

PUBLICATION NUMBER

PUBLICATION DATE

PUBLICATION TITLE

BE EXACT PIN-POINT WHERE IT IS

PAGE NO.

PARA-GRAPH

FIGURE NO.

TABLE NO.

IN THIS SPACE, TELL WHAT IS WRONG AND WHAT SHOULD BE DONE ABOUT IT.

TEAR ALONG PERFORATED LINE

PRINTED NAME, GRADE OR TITLE AND TELEPHONE NUMBER

SIGN HERE

THE METRIC SYSTEM AND EQUIVALENTS

Linear Measure

1 centimeter = 10 millimeters = .39 inch
 1 decimeter = 10 centimeters = 3.94 inches
 1 meter = 10 decimeters = 39.37 inches
 1 dekameter = 10 meters = 32.8 feet
 1 hectometer = 10 dekameters = 328.08 feet
 1 kilometer = 10 hectometers = 3.2808.8 feet

Weights

1 centigram = 10 milligrams = .15 grain
 1 decigram = 10 centigrams = 1.54 grains
 1 gram = 10 decigram = .035 ounce
 1 dekagram = 10 grams = .35 ounce
 1 hectogram = 10 dekagrams = 3.52 ounces
 1 kilogram = 10 hectograms = 2.2 pounds
 1 quintal = 100 kilograms = 220.46 pounds
 1 metric ton = 10 quintals = 1.1 short tons

Cubic Measure

1 cu. centimeter = 1000 cu. millimeters = .06 cu. inch
 1 cu. decimeter = 1000 cu. centimeters = 61.02 cu in.
 1 cu. meter = 1000 cu. decimeters = 35.31 cu. feet

Square measure

1 sq. centimeter = 100 sq. millimeters = .155 sq. in.
 1 sq. decimeter = 100 sq. centimeters = 15.5 inches
 1 sq. meter (centare) = 100 sq. decimeters = 10.76 feet
 1 sq. dekameter (are) = 100 sq. meters = 1.076.4 sq. ft.
 1 sq. hectometer (hectare) = 100 sq. dekameters = 2.47 acres
 1 sq. kilometer = 100 hectometers = .386 sq. miles

Liquid Measure

1 dekaliter = 10 liters = 2.64 gallons
 1 hectoliter = 10 dekaliters = 26.42 gallons
 1 kiloliter = 10 hectoliters = 264.18 gallons
 1 liter = 10 deciliters = 33.81 fl. ounces
 1 centiliter = 10 milliliters = .34 fl. ounce
 1 deciliter = 10 centiliters = 3.38 fl. ounces
 1 metric ton = 10 quintals = 1.1 short tons

Approximate Conversion Factors

To change	To	Multiply by	To change	To	Multiply by
inches	centimeters	2.540	ounce inches	newton-meters	.0070062
feet	meters	.305	centimeters	inches	.394
yards	meters	.914	meters	feet	3.280
miles	kilometers	1.609	meters	yards	1.094
sq. inches	sq. centimeters	6.451	kilometers	miles	.621
sq. feet	sq. meters	.093	sq. centimeters	sq. inches	.155
sq. yards	sq. meters	.836	sq. meters	sq. yards	10.764
sq. miles	sq. kilometers	2.590	sq. kilometers	sq. miles	1.196
acres	sq. hectometers	.405	sq. hectometers	acres	2.471
cubic feet	cubic meters	.028	cubic meters	cubic feet	35.315
cubic yards	cubic meters	.765	milliliters	fluid ounces	.034
fluid ounces	milliliters	29.573	liters	pints	2.113
pints	liters	.472	liters	quarts	1.057
quarts	liters	.946	grams	ounces	.035
gallons	liters	3.785	kilograms	pounds	2.205
ounces	grams	28.349	metric tons	short tons	1.102
pounds	kilograms	.454	pound-feet	newton-meters	1.356
short tons	metric tons	.907			
pound inches	newton-meters	.11296			

Temperature (Exact)

°F Fahrenheit temperature

5/9 (after subtracting 32)

Celsius Temperature °C

